

WALPOLE PARK SOUTH | WALPOLE, MA

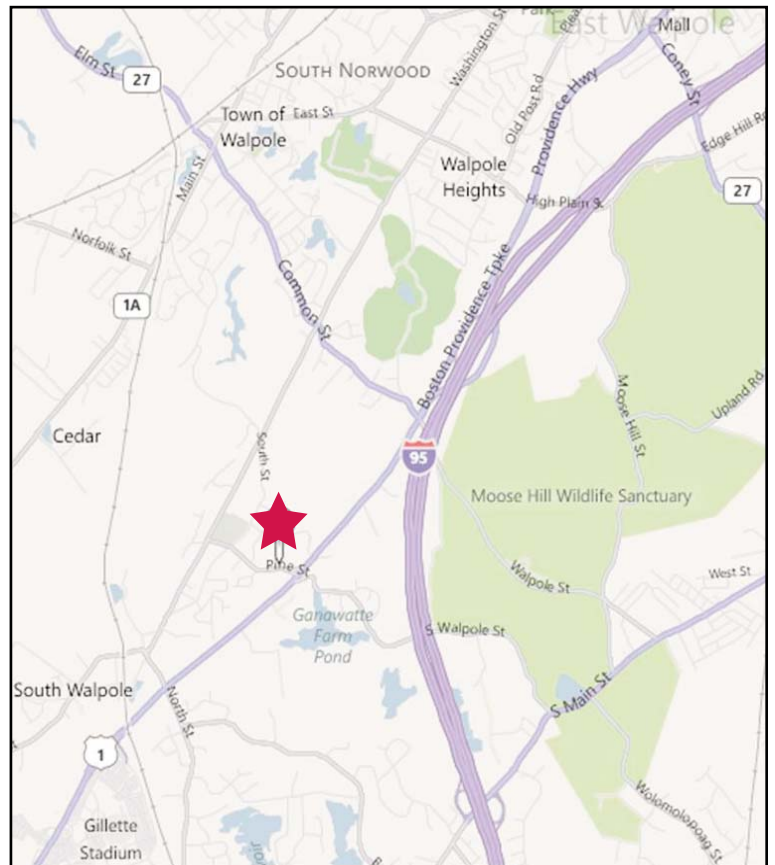
Office/Warehouse Space for Lease

Building 9, Unit 1



BUILDING SPECIFICATIONS

Total Square Feet:	19,141 SF
	Office: 5,215 SF
	Warehouse: 13,926 SF
Land Area:	7.28 Acres
Ceiling Height:	22' Clear
Zoning:	Limited Manufacturing
Air Conditioning:	Office Area
Loading:	3 Tailboards
Parking:	Ample
Column Spacing:	30' x 40'
Power:	400 Amp 277/488 Volts
Utilities:	Gas: Bay State Gas
	Electricity: Boston Edison
	Sewer/Water: Town of Walpole
Sprinklers:	Wet System
Roof:	Conventional Rubber Roof
Real Estate Tax & Cam:	\$1.75 PSF (FY 2011)
Lease Rate:	\$6.95 PSF NNN
Available:	November 2011
Location:	Located on Route 1 approx. 1 mile off I-95



Cathy Minnerly, Executive Vice President | 617.457.3334 | cminnerly@naihunneman.com

Ovar Osbold, Associate | 617.457.3222 | oosbold@naihunneman.com

303 Congress Street | Boston, MA 02210 | 617.457.3400 | www.naihunneman.com

Commercial Real Estate Services, Worldwide.

All information furnished regarding property for sale or lease is from sources deemed reliable, but no warranty or representation is made as to the accuracy thereof and same is submitted subject to errors, omissions, change of price, rental or other conditions prior to sale or lease, or withdrawal without notice.

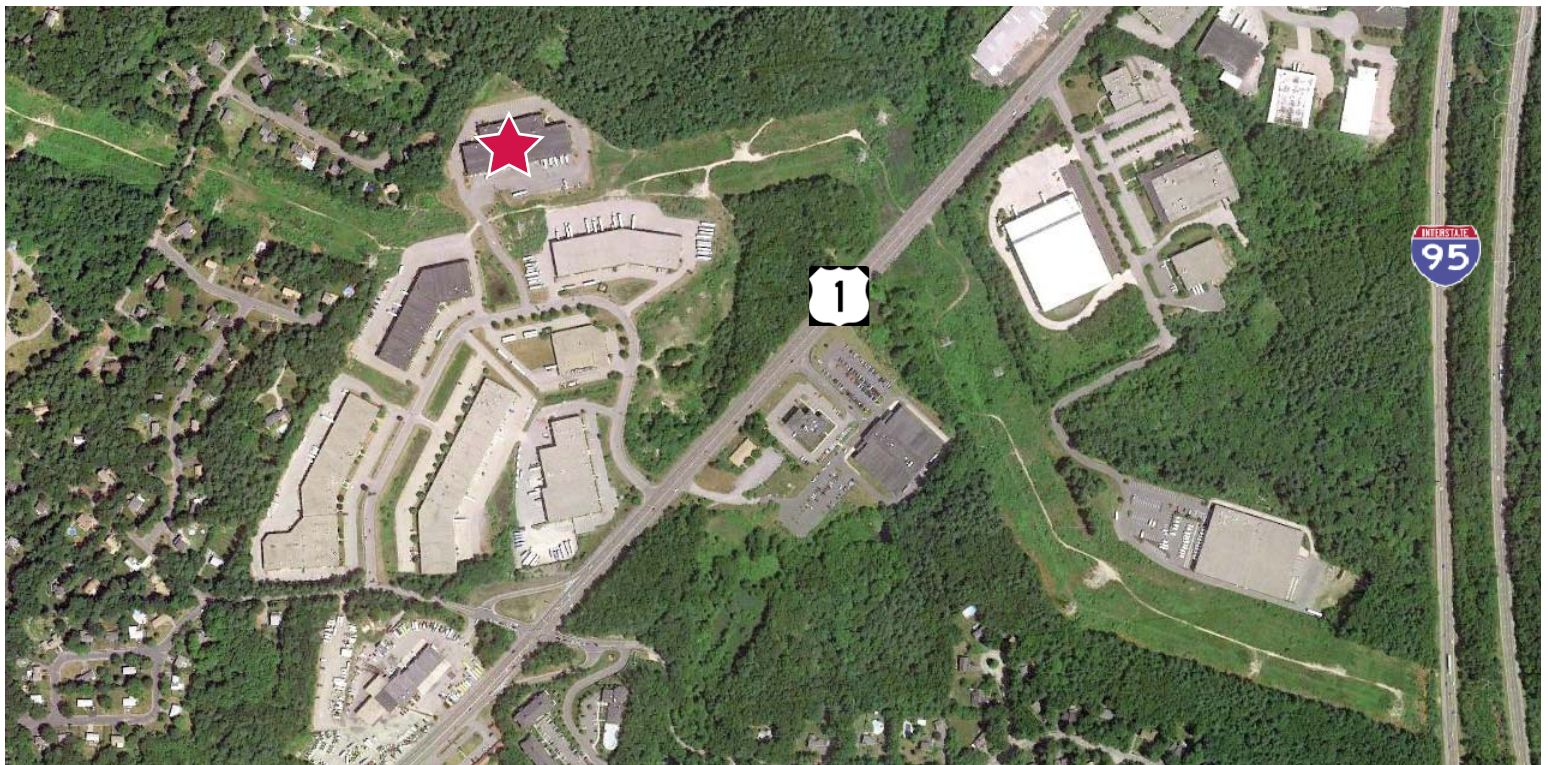
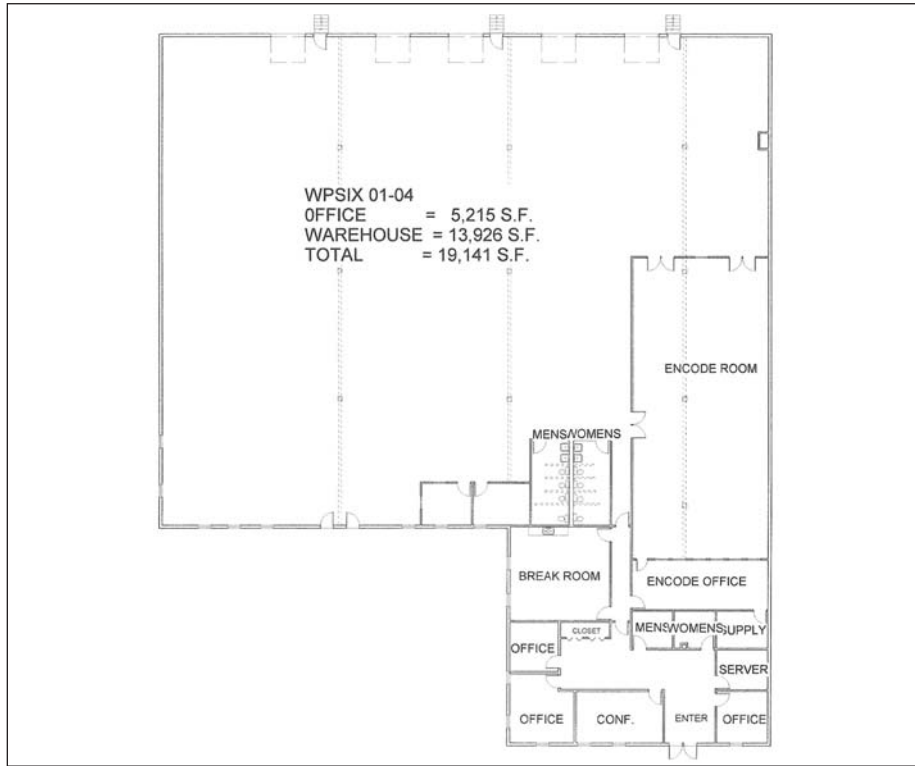
contact information

WALPOLE PARK SOUTH | WALPOLE

Office/Warehouse Space for Lease

Building 9, Unit 1

FLOOR PLAN:
Unit 1



Commercial Real Estate Services. Worldwide.

All information furnished regarding property for sale or lease is from sources deemed reliable, but no warranty or representation is made as to the accuracy thereof and same is submitted subject to errors, omissions, change of price, rental or other conditions prior to sale or lease, or withdrawal without notice.

Cathy Minnerly, Executive Vice President | 617.457.3334 | cminnerly@naihunneman.com
Ovar Osvold, Associate | 617.457.3222 | oosvold@naihunneman.com

303 Congress Street | Boston, MA 02210 | 617.457.3400 | www.naihunneman.com

contact information