

# LIBERTY & UNION INDUSTRIAL PARK & MYLES STANDISH INDUSTRIAL PARK TAUNTON, MASSACHUSETTS



Available Now



Available 2010-2011

Land for Sale  
Zoned Industrial

**NAI** Hunneman

Commercial Real Estate Services, Worldwide.

All information furnished regarding property for sale or lease is from sources deemed reliable, but no warranty or representation is made as to the accuracy thereof and same is submitted subject to errors, omissions, change of price, rental or other conditions prior to sale or lease, or withdrawal without notice.

#### contact information

Cathy Minnerly, Executive Vice President | 617 457 3334 | [cminnerly@naihunneman.com](mailto:cminnerly@naihunneman.com)

Ovar Osvold, Associate | 617 457 3222 | [osvold@naihunneman.com](mailto:osvold@naihunneman.com)

303 Congress Street | Boston, MA 02210 | 617 457 3400 | [www.naihunneman.com](http://www.naihunneman.com)

# LIBERTY & UNION INDUSTRIAL PARK & MYLES STANDISH INDUSTRIAL PARK | TAUNTON

## Land for Sale

### SPECIFICATIONS:

#### LIBERTY & UNION INDUSTRIAL PARK

**TOTAL SIZE OF PARK** 350 acres

**AVAILABLE** Immediately

AVAILABILITIES	Lot	Size (acres)	Upland (acres)	Maximum Warehouse square footage capability
	5A	9.98	±6.3	80,000 SF
	9A	2.7	±1.1	7,500 SF
	9B	5.5	±4.3	40,000 SF
	13	22.8	±10.9	(2 parcels) 25,000-50,000 SF
	14	43.8	±35.4	100,000 - 650,000 SF

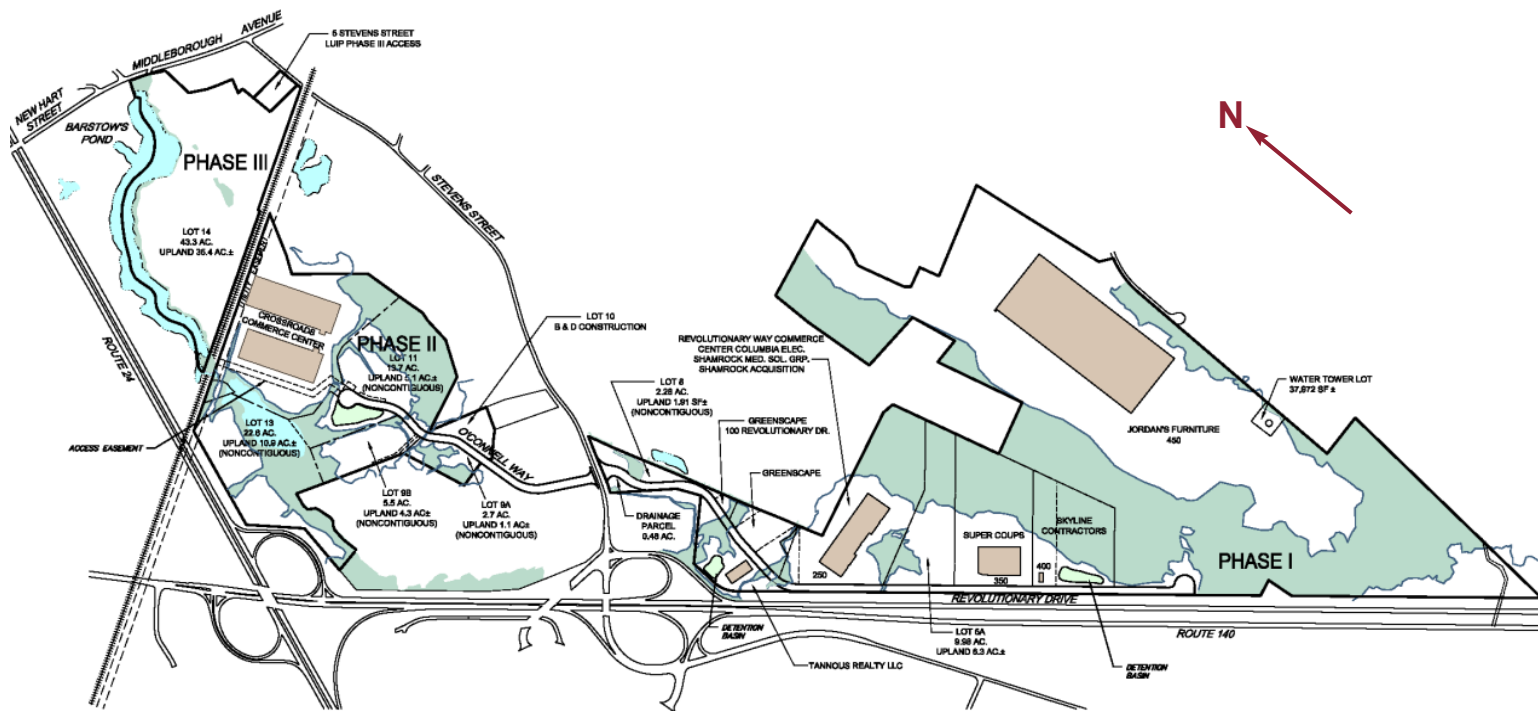
#### DIMENSION REQUIREMENTS

Front Yard: 100'  
Side Yard: 50'  
Rear Yard: 50'

#### LOCATION

The Park is situated at the junction of Routes 24 and 140 in close proximity to the major metropolitan cities of Boston and Providence.

### MASTER PLAN



#### contact information

Cathy Minnerly, Executive Vice President | 617 457 3334 | cminnerly@naihunneman.com

Ovar Osvold, Associate | 617 457 3222 | oosvold@naihunneman.com

303 Congress Street | Boston, MA 02210 | 617 457 3400 | www.naihunneman.com



Commercial Real Estate Services, Worldwide.

All information furnished regarding property for sale or lease is from sources deemed reliable, but no warranty or representation is made as to the accuracy thereof and same is submitted subject to errors, omissions, change of price, rental or other conditions prior to sale or lease, or withdrawal without notice.

# LIBERTY & UNION INDUSTRIAL PARK & MYLES STANDISH INDUSTRIAL PARK | TAUNTON Zoned Industrial

## SPECIFICATIONS:

### MYLES STANDISH INDUSTRIAL PARK

#### TOTAL SIZE OF PARK

1,061 acres

#### AVAILABLE

2010-2011

#### AVAILABLE LOTS

Lots capable of accommodating from ±20,000 SF up to 1,000,000 SF

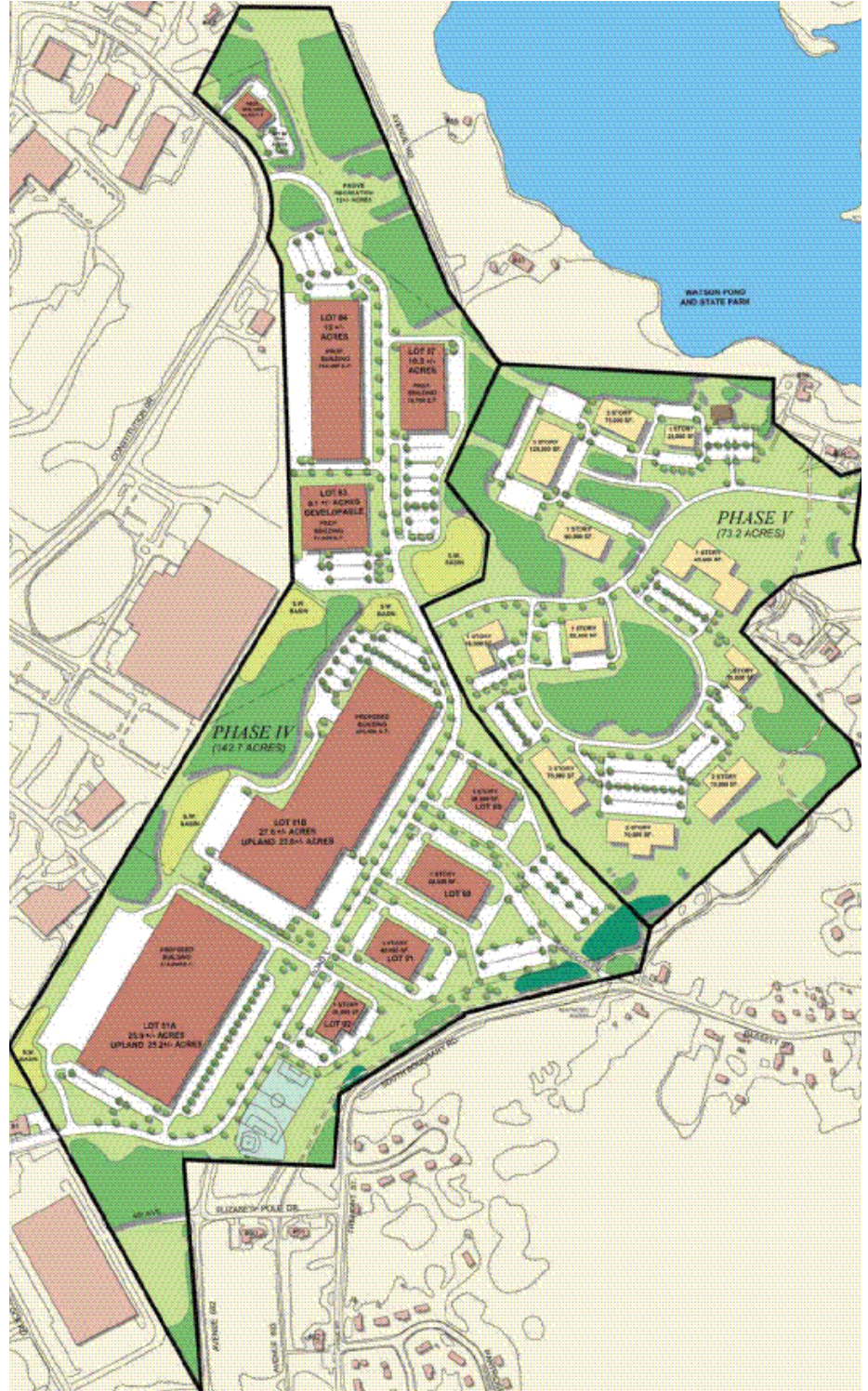
#### DIMENSIONS REQUIREMENTS

Front Yard: 100'  
Side Yard: 50'  
Rear Yard: 50'

#### LOCATION

The Park is located off I-495 at Exit 9 (Bay Street), only eight miles from both I-95 and Route 24.

## MASTER PLAN



## contact information

Cathy Minnerly, Executive Vice President | 617 457 3334 | cminnerly@naihunneman.com

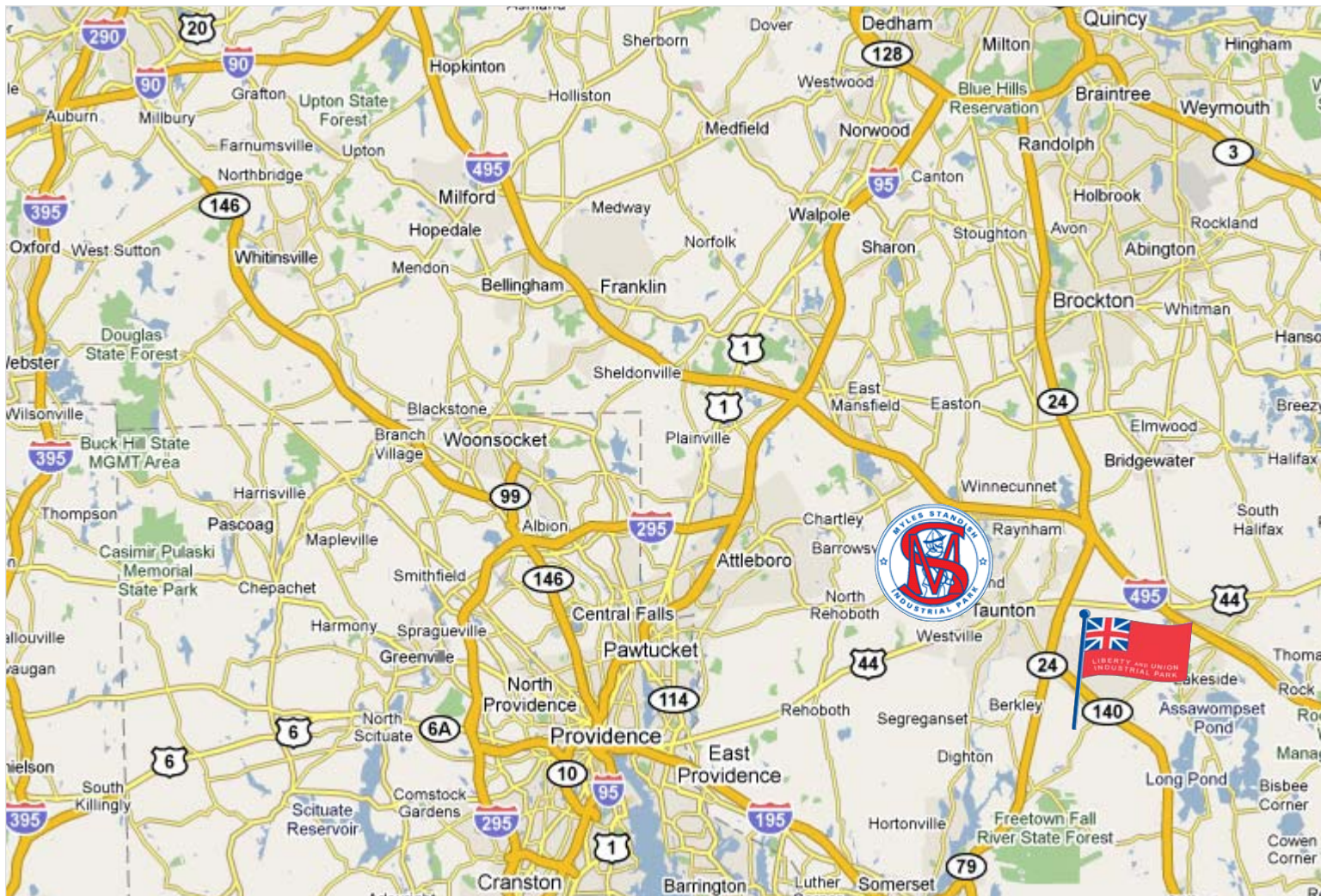
Ovar Osvold, Associate | 617 457 3222 | oosvold@naihunneman.com

303 Congress Street | Boston, MA 02210 | 617 457 3400 | www.naihunneman.com

All information furnished regarding property for sale or lease is from sources deemed reliable, but no warranty or representation is made as to the accuracy thereof and same is submitted subject to errors, omissions, change of price, rental or other conditions prior to sale or lease, or withdrawal without notice.

# LIBERTY & UNION INDUSTRIAL PARK & MYLES STANDISH INDUSTRIAL PARK | TAUNTON

## Land for Sale



### HIGHLIGHTS:

<b>DEVELOPED AND MANAGED BY</b>	Taunton Development Corporation
<b>PRICE</b>	\$125,000 per acre of upland
<b>ZONING</b>	Industrial
<b>IMPERVIOUS COVERAGE</b>	80%
<b>INCENTIVES</b>	Tax increment financing programs are offered by the City of Taunton and the Commonwealth of Massachusetts
<b>UTILITIES</b>	Gas: Bay State Gas Electric: Taunton Municipal Light & Power Sewer/water: City of Taunton

### contact information

Cathy Minnerly, Executive Vice President | 617 457 3334 | cminnerly@naihunneman.com

Ovar Osvold, Associate | 617 457 3222 | oosvold@naihunneman.com

303 Congress Street | Boston, MA 02210 | 617 457 3400 | www.naihunneman.com



Commercial Real Estate Services, Worldwide.

All information furnished regarding property for sale or lease is from sources deemed reliable, but no warranty or representation is made as to the accuracy thereof and same is submitted subject to errors, omissions, change of price, rental or other conditions prior to sale or lease, or withdrawal without notice.