

FOR LEASE

72 Cherry Hill Drive | Beverly



10,682 SF of **First Class Office** in Cherry Hill Corporate Center

BUILDING SPECS

| | |
|------------------|-------------------------------|
| Available Space: | 10,682 SF - Subdividable |
| Building Size: | 59,384 SF |
| Year Built: | 1984 |
| HVAC: | VAV System |
| Utilities: | Separately metered |
| Construction: | Red brick with ribbon windows |
| Parking: | 248 surface spaces |



contact information

Greg Klemmer, SIOR, Executive Vice President | 617 457 3253 | gklemmer@naihunneman.com
Tim Brodigan, SIOR, Vice President | 617 457 3247 | tbrodigan@naihunneman.com
Jim Boudrot, SIOR, Executive Vice President | 617 457 3328 | jboudrot@naihunneman.com
Michael McCarthy, Vice President | 617 457 3224 | mmccarthy@naihunneman.com



Commercial Real Estate Services, Worldwide.

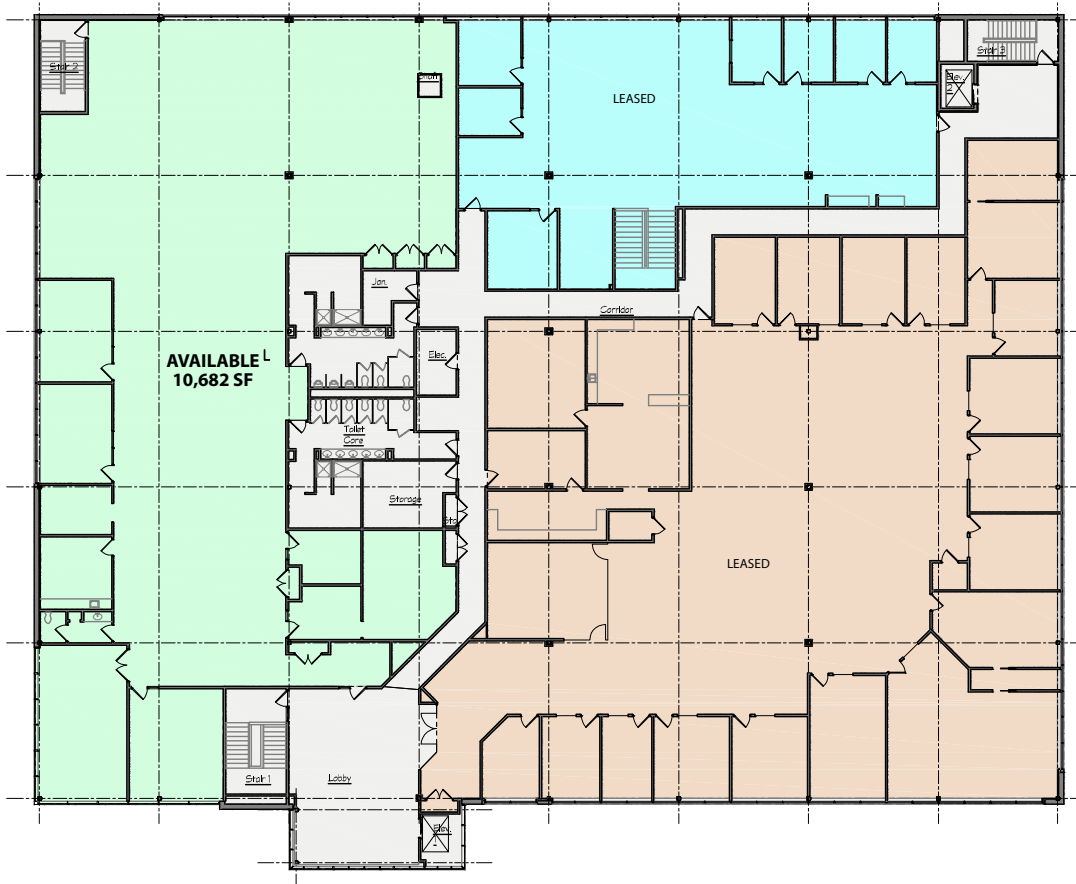
0303 Congress Street | Boston, MA 02210 | 617 457 3400 | www.naihunneman.com

All information furnished regarding property for sale or lease is from sources deemed reliable, but no warranty or representation is made as to the accuracy thereof and same is submitted subject to errors, omissions, changes of price, rental or other conditions, prior sale or lease, or withdrawal without notice.

FOR LEASE

72 Cherry Hill Drive | Beverly

FLOOR PLAN



contact information

Greg Klemmer, SIOR, Executive Vice President | 617 457 3253 | gklemmer@naihunneman.com
Tim Brodigan, SIOR, Vice President | 617 457 3247 | tbrodigan@naihunneman.com
Jim Boudrot, SIOR, Executive Vice President | 617 457 3328 | jboudrot@naihunneman.com
Michael McCarthy, Vice President | 617 457 3224 | mmccarthy@naihunneman.com



Commercial Real Estate Services, Worldwide.

0303 Congress Street | Boston, MA 02210 | 617 457 3400 | www.naihunneman.com

All information furnished regarding property for sale or lease is from sources deemed reliable, but no warranty or representation is made as to the accuracy thereof and same is submitted subject to errors, omissions, changes of price, rental or other conditions, prior sale or lease, or withdrawal without notice.