

OFFICE SPACE FOR SUBLEASE

67 Batterymarch Street | Boston

3,250-6,500 SF Available



OFFICE SPACE

67 Batterymarch Street | Boston

Building Size: 21,573 RSF

Available Space:

- 3rd Floor: 3,250 RSF
- 2nd Floor: 3,250 RSF

Asking Rate: \$15.00/RSF!

Term: Sublease through
December 31, 2011

Availability: Immediate

Amenities:

- Steps away from numerous banks, health clubs, shopping, and hotels including Equinox fitness, The Langham Hotel and Brandy Peete's.

Access:

- Walking distance to South Station, Commuter Rail, Commuter Boats and many major Parking garages.
- Convenient to all major highways.



contact information



David M. Cooney, Assistant VP | 617.457.3305 | dcooney@naihunneman.com

303 Congress Street | Boston, MA 02210 | 617.457.3400 | www.naihunneman.com

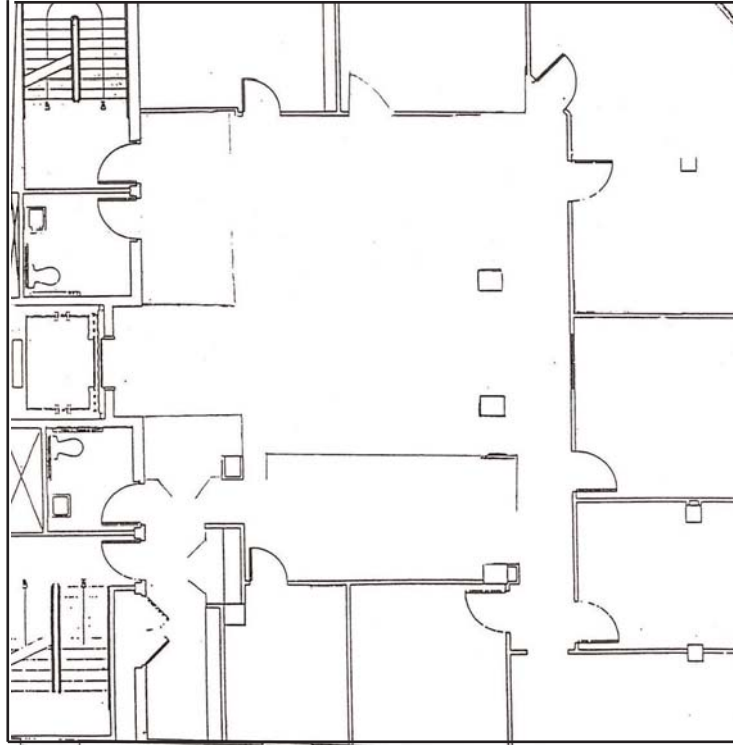
Commercial Real Estate Services, Worldwide.

All information furnished regarding property for sale or lease is from sources deemed reliable, but no warranty or representation is made as to the accuracy thereof and same is submitted subject to errors, omissions, change of price, rental or other conditions prior to sale or lease, or withdrawal without notice.

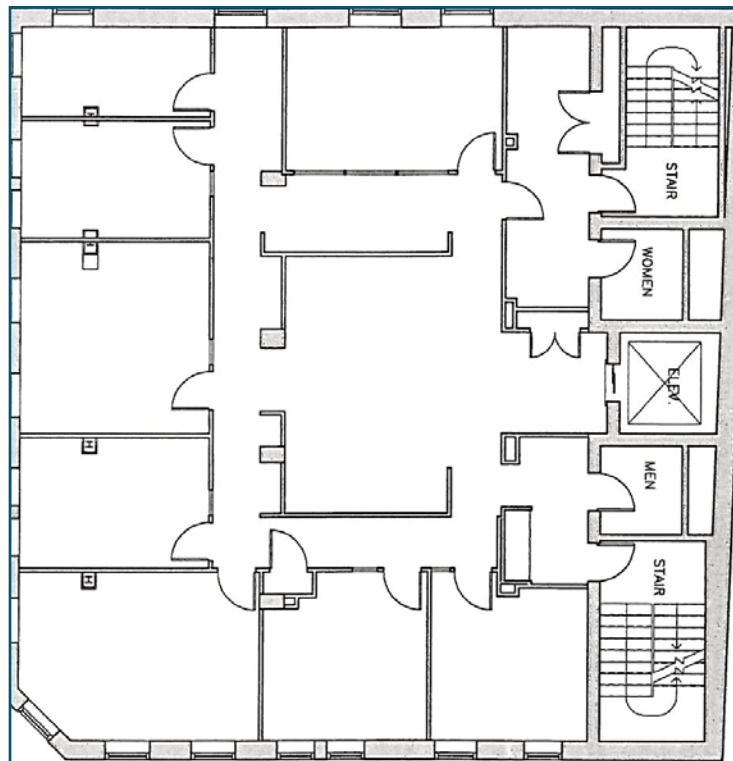
67 BATTERYMARCH STREET | BOSTON

Floor Plans

3rd Floor
3,250 RSF



2nd Floor
3,250 RSF



contact information



David M. Cooney, Assistant VP | 617.457.3305 | dcooney@naihunneman.com

303 Congress Street | Boston, MA 02210 | 617.457.3400 | www.naihunneman.com

Commercial Real Estate Services, Worldwide.

All information furnished regarding property for sale or lease is from sources deemed reliable, but no warranty or representation is made as to the accuracy thereof and same is submitted subject to errors, omissions, change of price, rental or other conditions prior to sale or lease, or withdrawal without notice.