

661 PLEASANT STREET | NORWOOD, MA



For Lease
500 - 3,665 SF Office
12,000 - 20,000 SF Warehouse

contact information

Cathy Minnerly, Executive Vice President | 617 457 3334 | cminnerly@naihunneman.com
Ovar Osvold, Associate | 617 457 3222 | oosvold@naihunneman.com

303 Congress Street | Boston, MA 02210 | 617 457 3400 | www.naihunneman.com

NAIHunneman

Commercial Real Estate Services, Worldwide.

All information furnished regarding property for sale or lease is from sources deemed reliable, but no warranty or representation is made as to the accuracy thereof and same is submitted subject to errors, omissions, change of price, rental or other conditions prior to sale or lease, or withdrawal without notice.

661 PLEASANT STREET | NORWOOD

12,000 - 20,000 SF Warehouse

500 - 3,665 SF Office

BUILDING SPECIFICATIONS:

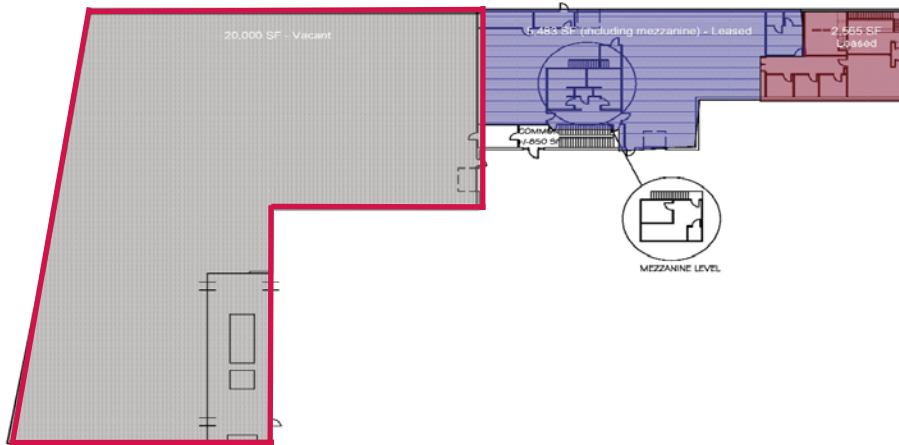
Total SF	68,928 SF	Roof	Fully adhered rubber membrane (86 Morse St) Ballasted rubber roof (661 Pleasant)
Available SF		Ceiling Clear Height	28' clear in 12,000 SF Warehouse 22' clear in 20,000 SF Warehouse
Office	500 SF up to 3,665 SF	Loading	2 loading docks in 12,000 SF Warehouse 3 loading docks in 20,000 SF Warehouse
Warehouse	12,000 SF up to 20,000 SF	Utilities	Gas: Keyspan Electric: Town of Norwood Water/Sewer: Town of Norwood
Property Type	Office/Warehouse/ Manufacturing	Available	Immediately
Land Area	3.95 Acres	Lease Rate	<i>1st Floor Vacancy (20,000 SF):</i> \$5.35 psf NNN <i>1st Floor Vacancy (12,000 SF):</i> \$6.95 psf NNN <i>2nd Floor Vacancy:</i> \$13.50 Gross net of Gas, Electric & Cleaning
Year Built	1996	Location	Located just off a very desirable stretch of Route 1 and only 2 miles from I-95
Construction	Reinforced Concrete		
Sprinklers	Fully sprinklered		
HVAC	Office area only Roof top gas fired system		
Zoning	Manufacturing		
Power	2,000 amps in entire building		
R.E. Tax/CAM	\$0.77 psf (FY 2012)		
Parking	126 spaces available		



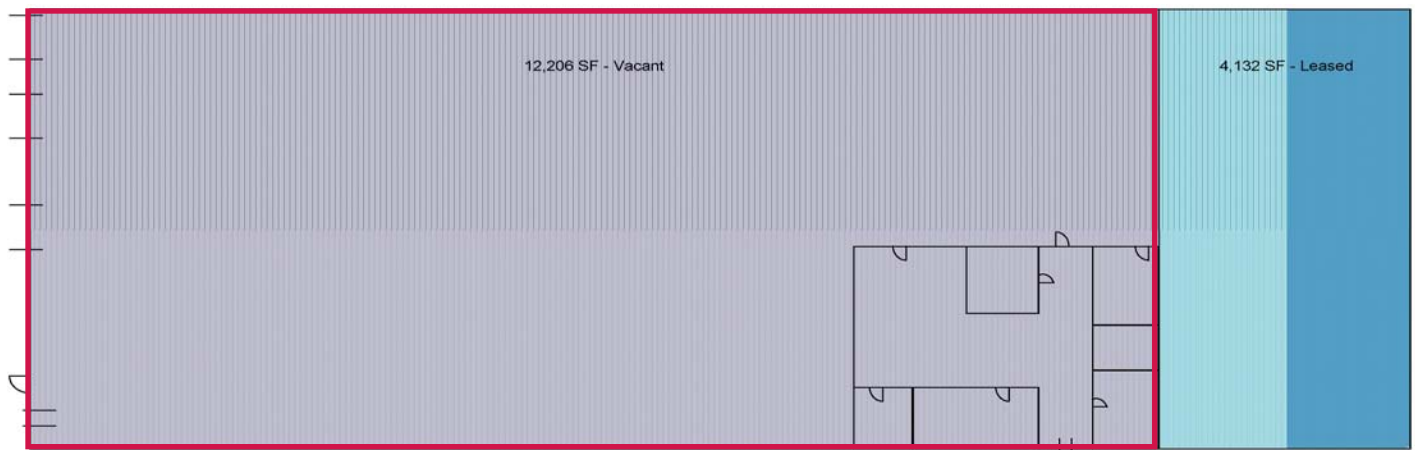
661 PLEASANT STREET | NORWOOD

Office/Warehouse Space For Lease

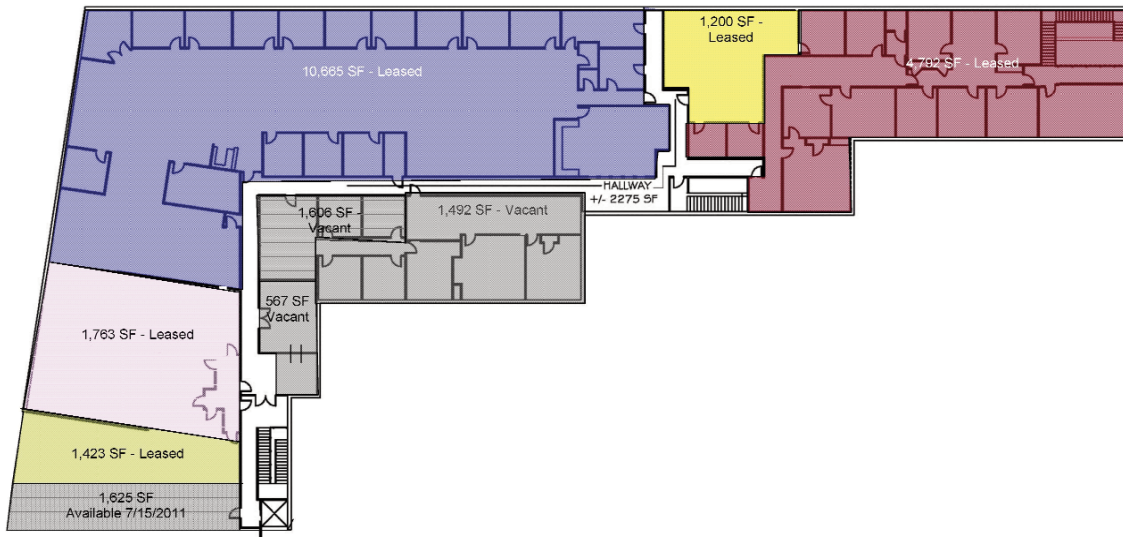
661 Pleasant St
1st Floor



86 Morse St
1st Floor

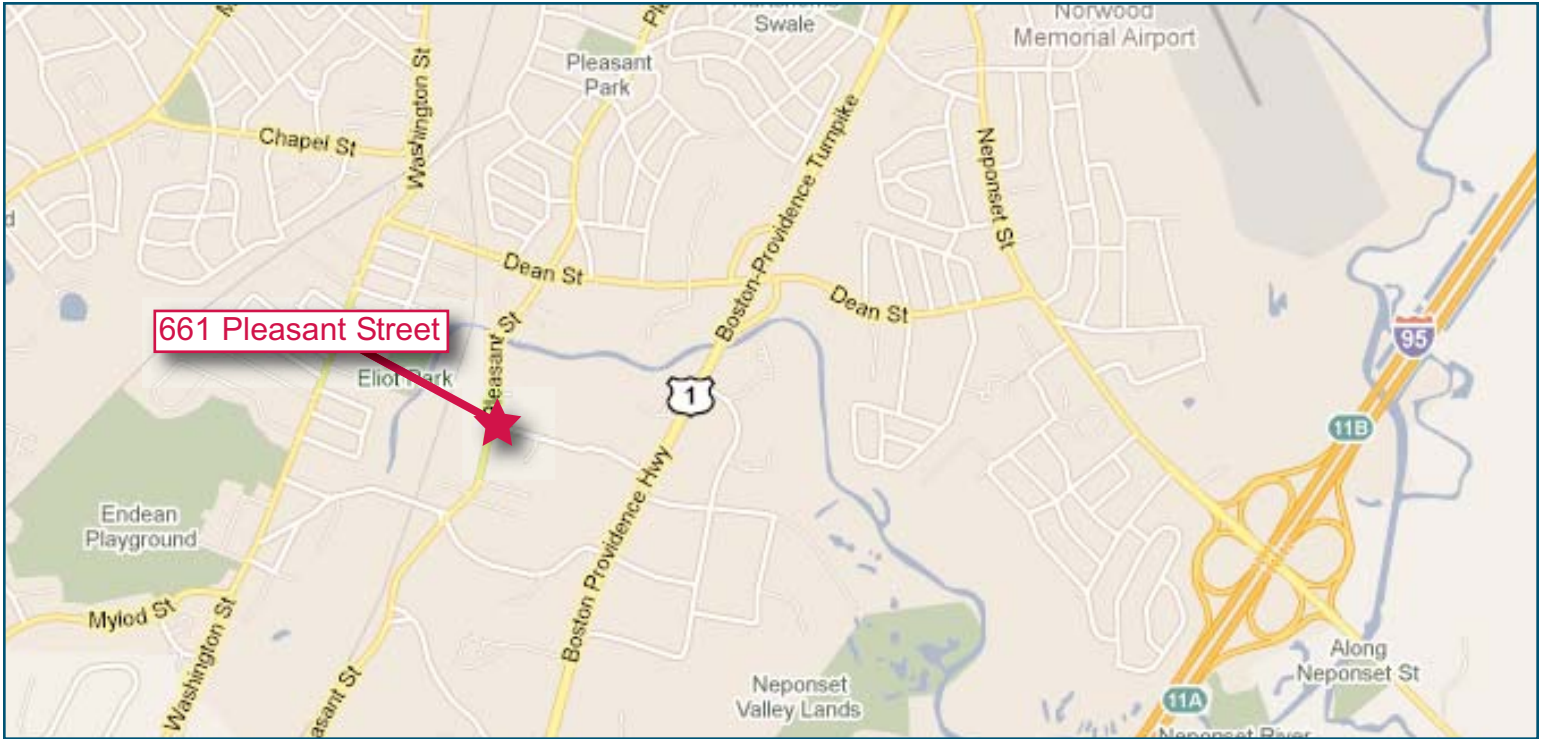


661 Pleasant St
2nd Floor



661 PLEASANT STREET | NORWOOD

Office/Warehouse Space for Lease



Commercial Real Estate Services, Worldwide.

All information furnished regarding property for sale or lease is from sources deemed reliable, but no warranty or representation is made as to the accuracy thereof and same is submitted subject to errors, omissions, change of price, rental or other conditions prior to sale or lease, or withdrawal without notice.

contact information

Cathy Minnerly, Executive Vice President | 617 457 3334 | cminnerly@naihunneman.com
Ovar Osbold, Associate | 617 457 3222 | osbold@naihunneman.com

303 Congress Street | Boston, MA 02210 | 617 457 3400 | www.naihunneman.com