

61 INNERBELT ROAD | SOMERVILLE, MA



For Lease
23,915 SF Office Space Available

NAIHunneman

Commercial Real Estate Services, Worldwide.

303 Congress Street | Boston, MA 02210 | 617 457 3400 | www.naihunneman.com

All information furnished regarding property for sale or lease is from sources deemed reliable, but no warranty or representation is made as to the accuracy thereof and same is submitted subject to errors, omissions, change of price, rental or other conditions prior to sale or lease, or withdrawal without notice.

61 INNERBELT ROAD | SOMERVILLE, MA

61 Innerbelt Road in Somerville, MA is a 23,915 square foot, single-story standalone office building located in a highly prized park with uses that range from office, data center, R&D and warehouse/distribution. The building is located immediately off Exit 28 along I-93 and a mere half a mile walk to the Sullivan Square MBTA Station.

BUILDING SPECIFICATIONS:

TOTAL SIZE	23,915 SF
AVAILABLE SPACE	23,915 SF
AVAILABLE	July 1, 2011
RENTAL RATE	\$13.95 / SF NNN
FLOORS	One
PARKING	Free surface parking (3.1 / 1,000 SF)
CONSTRUCTION	Concrete slab floor, concrete block wall, steel girders, rubber membrane roof
POWER	800 amps
HVAC	100% throughout
LIFE SAFETY	100% we system throughout
FEATURES/AMENITIES	Located in Innerbelt Park, Somerville, MA Two minutes from I-93 Two minutes from Route 28 Half a mile walk to Sullivan Square MBTA Station

[contact information](#)



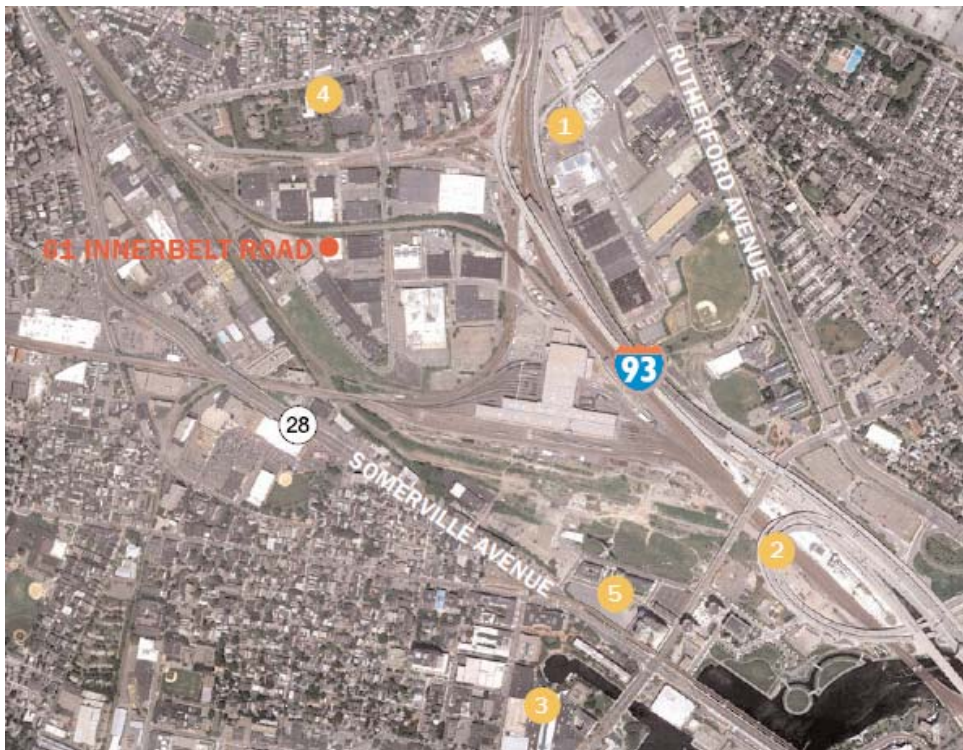
Commercial Real Estate Services, Worldwide.

Trey Agnew, Executive Vice President & Principal | 617 457 3363 | tagnew@naihunneman.com

303 Congress Street | Boston, MA 02210 | 617 457 3400 | www.naihunneman.com

All information furnished regarding property for sale or lease is from sources deemed reliable, but no warranty or representation is made as to the accuracy thereof and same is submitted subject to errors, omissions, change of price, rental or other conditions prior to sale or lease, or withdrawal without notice.

61 INNERBELT ROAD | SOMERVILLE, MA



LOCATION

- 1 Sullivan Square MBTA Orange Line Station
- 2 Community College MBTA Orange Line Station
- 3 CambridgeSide Galleria
- 4 Holiday Inn
- 5 Lechere MBTA Green Line Station

[contact information](#)



Commercial Real Estate Services, Worldwide.

Trey Agnew, Executive Vice President & Principal | 617 457 3363 | tagnew@naihunneman.com

303 Congress Street | Boston, MA 02210 | 617 457 3400 | www.naihunneman.com

All information furnished regarding property for sale or lease is from sources deemed reliable, but no warranty or representation is made as to the accuracy thereof and same is submitted subject to errors, omissions, change of price, rental or other conditions prior to sale or lease, or withdrawal without notice.

61 INNERBELT ROAD | SOMERVILLE, MA



Commercial Real Estate Services, Worldwide.

All information furnished regarding property for sale or lease is from sources deemed reliable, but no warranty or representation is made as to the accuracy thereof and same is submitted subject to errors, omissions, change of price, rental or other conditions prior to sale or lease, or withdrawal without notice.

[contact information](#)

Trey Agnew, Executive Vice President & Principal | 617 457 3363 | tagnew@naihunneman.com
303 Congress Street | Boston, MA 02210 | 617 457 3400 | www.naihunneman.com