

# 6 BEACON STREET | BOSTON

Office Space for Lease on Beacon Hill



### contact information

**Benjamin Sutton, Senior Associate** | 617 457 3262 | bsutton@naihunneman.com  
**Jeffrey Becker, Senior Vice President** | 617 457 3424 | jbecker@naihunneman.com  
**Bonny Doorakian, Vice President** | 617 457 3317 | bdoorakian@naihunneman.com



Commercial Real Estate Services, Worldwide. 303 Congress Street | Boston, MA 02210 | 617 457 3400 | www.naihunneman.com  
All information furnished regarding property for sale or lease is from sources deemed reliable, but no warranty or representation is made as to the accuracy thereof and same is submitted subject to errors, omissions, change of price, rental or other conditions prior to sale or lease, or withdrawal without notice.

# 6 BEACON STREET | BOSTON

Office Space for Lease on Beacon Hill



Available Spaces: 28,360 SF

### 2nd Floor:

Suite 220: 1,785 SF  
Suite 225: 790 SF

### 3rd Floor:

Suite 305: 2,190 SF (5.1.12)  
Suite 315: 4,140 SF (2.1.12)  
Suite 325: 790 SF

### 4th Floor:

Suite 410: 1,390 SF  
Suite 415: 3,360 SF

### 6th Floor:

Suite 615: 4,650 SF (5.1.12)  
Suite 620: 790 SF (5.1.12)

### 7th Floor:

Suite 725: 790 SF

### 10th Floor:

Suite 1020: 4,670 SF

Rental Rate: \$26.00/RSF + elec.

### Amenities

- Class B Office Space on Beacon Hill
- Views of Boston Common
- Close proximity to State House, Park Street Station, and Faneuil Hall
- Steps to several parking garages, & area amenities including; the Omni Parker House, Bruegger's Bagels, Starbucks, Ruth's Chris Steakhouse, Sam Lagrassa, and much more!

### contact information

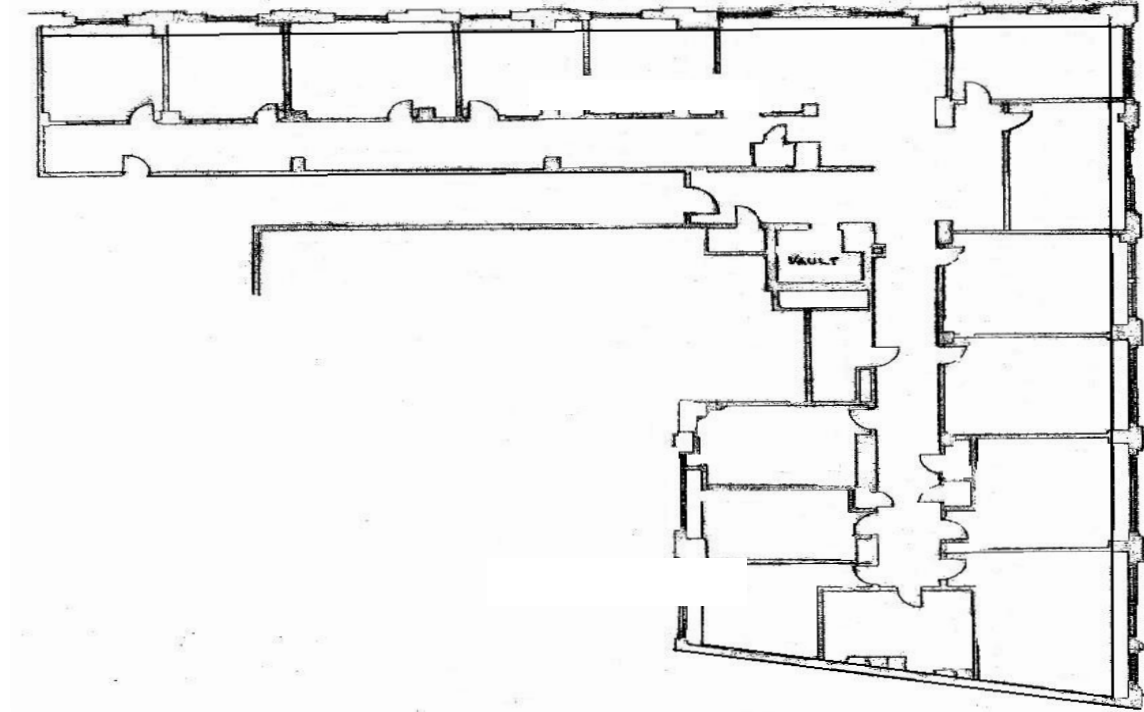
**Benjamin Sutton, Senior Associate** | 617 457 3262 | bsutton@naihunneman.com  
**Jeffrey Becker, Senior Vice President** | 617 457 3424 | jbecker@naihunneman.com  
**Bonny Doorakian, Vice President** | 617 457 3317 | bdoorakian@naihunneman.com



Commercial Real Estate Services, Worldwide. 303 Congress Street | Boston, MA 02210 | 617 457 3400 | www.naihunneman.com  
All information furnished regarding property for sale or lease is from sources deemed reliable, but no warranty or representation is made as to the accuracy thereof and same is submitted subject to errors, omissions, change of price, rental or other conditions prior to sale or lease, or withdrawal without notice.

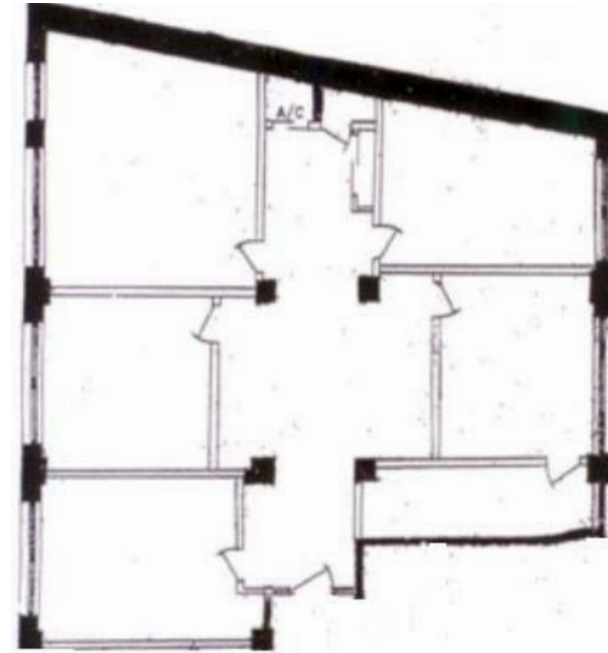
# 6 BEACON STREET | BOSTON

Floor Plan Suite 1020: 4,670 SF

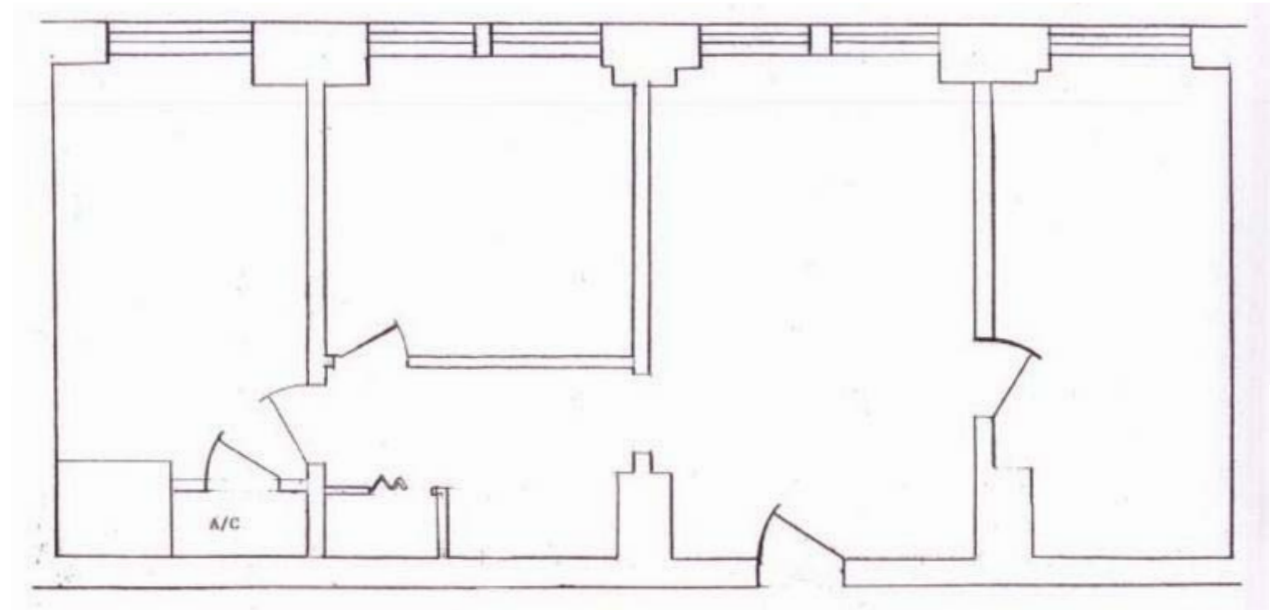


# 6 BEACON STREET | BOSTON

Floor Plan Suite 220: 1,785 SF



Floor Plan Suite 725: 790 SF



View from building

