

# OFFICE SPACE FOR LEASE

## 6 Edgerly Place | Boston, MA

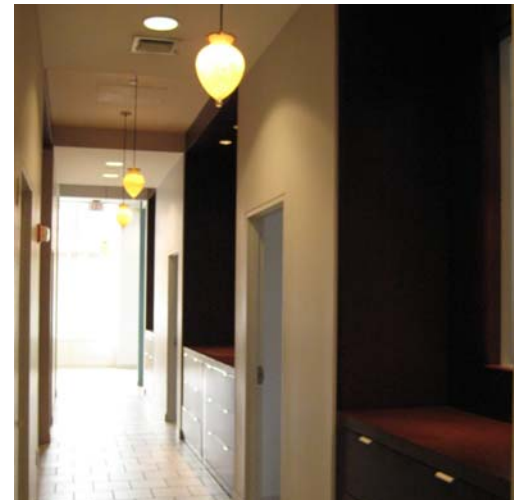
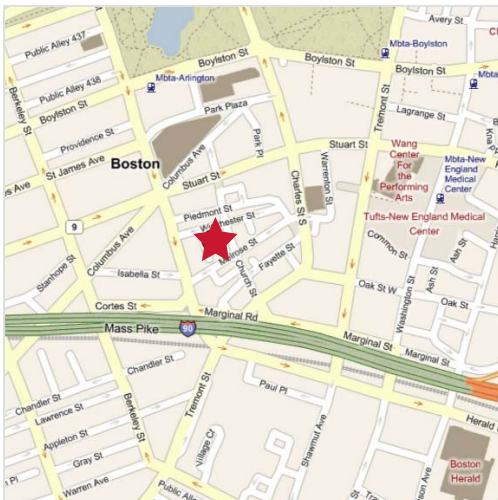


### 6 Edgerly Place Bay Village, Boston

6 Edgerly Place is located in Boston's Historic Bay Village, bordering Boston's Back Bay, Theater District and South End. This office condo is perfect for a small business who desires a trendy, easily accessible place to run their business. Located on the ground floor with a private entrance, this space gives a potential tenant great signage exposure and easy street access for clients.

- **Available Space:** 3,022 RSF
  - 2,599 RSF - Office - 1st Floor
  - 423 RSF - Storage - LL
- **Asking Rate:** Negotiable (+elec.)
- **Current Layout:** 3 large offices, 1 conference room, full kitchenette, & space for 3 workstations and reception.
- **Parking:** Nearby surface lot at \$300/month or \$14-\$18/day

**3,022 RSF IN BAY VILLAGE  
WITH STORAGE SPACE!**



Commercial Real Estate Services, Worldwide.

All information furnished regarding property for sale or lease is from sources deemed reliable, but no warranty or representation is made as to the accuracy thereof and same is submitted subject to errors, omissions, change of price, rental or other conditions prior to sale or lease, or withdrawal without notice.

**contact information**

Bonny L. Doorakian, Senior Associate | 617 457 3317 | bdoorakian@naihunneman.com

303 Congress Street | Boston, MA 02210 | 617 457 3400 | www.naihunneman.com

