

OFFICE/FLEX SPACE FOR SUBLEASE

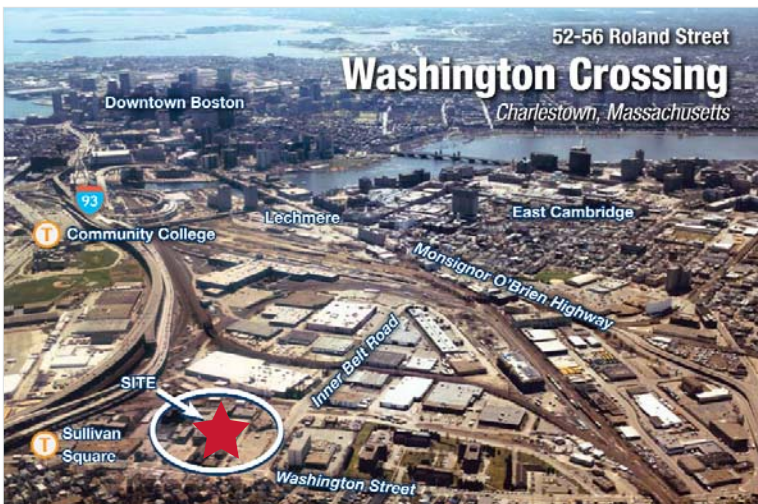
56 Roland Street | Charlestown



56 Roland Street | Charlestown Washington Crossing

Washington Crossing at 52/56 Roland Street is comprised of three multi-use buildings. Washington Crossing was renovated in 1999 through 2002, with continual interior and exterior common area upgrades.

- **Building Size:** Approx. 140,000 SF on 3 floors
- **Available Space:**
 - 1,358 SF on 3rd Floor
- **Rental Rate:** Negotiable
- **Sublease Term:** Through December 31, 2013
- **Amenities:**
 - Ample on-site parking included.
 - Conveniently located one block from I-93 Exit 28, and within walking distance of the Sullivan Square Orange Line MBTA Station.
 - Building has 2 main loading dock areas, some tenants have direct loading dock or loading door access.



contact information

NAI Hunneman

Commercial Real Estate Services, Worldwide.

All information furnished regarding property for sale or lease is from sources deemed reliable, but no warranty or representation is made as to the accuracy thereof and same is submitted subject to errors, omissions, change of price, rental or other conditions prior to sale or lease, or withdrawal without notice.

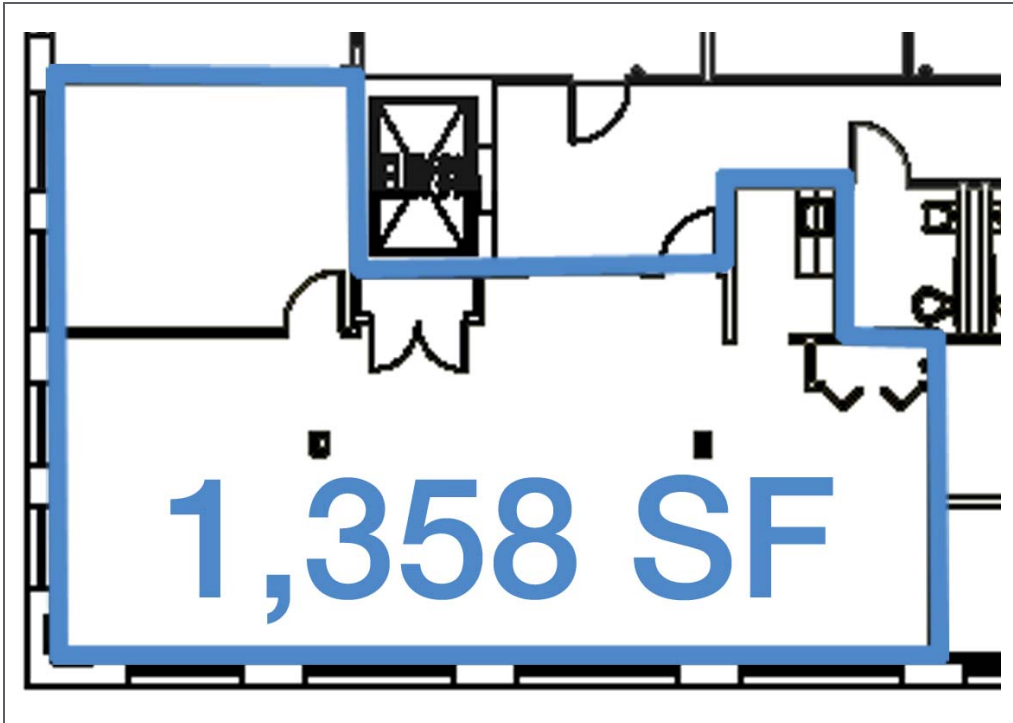
Bonny L. Doorakian, Senior Associate | 617.457.3317 | bdoorakian@naihunneman.com

303 Congress Street | Boston, MA 02210 | 617.457.3400 | www.naihunneman.com

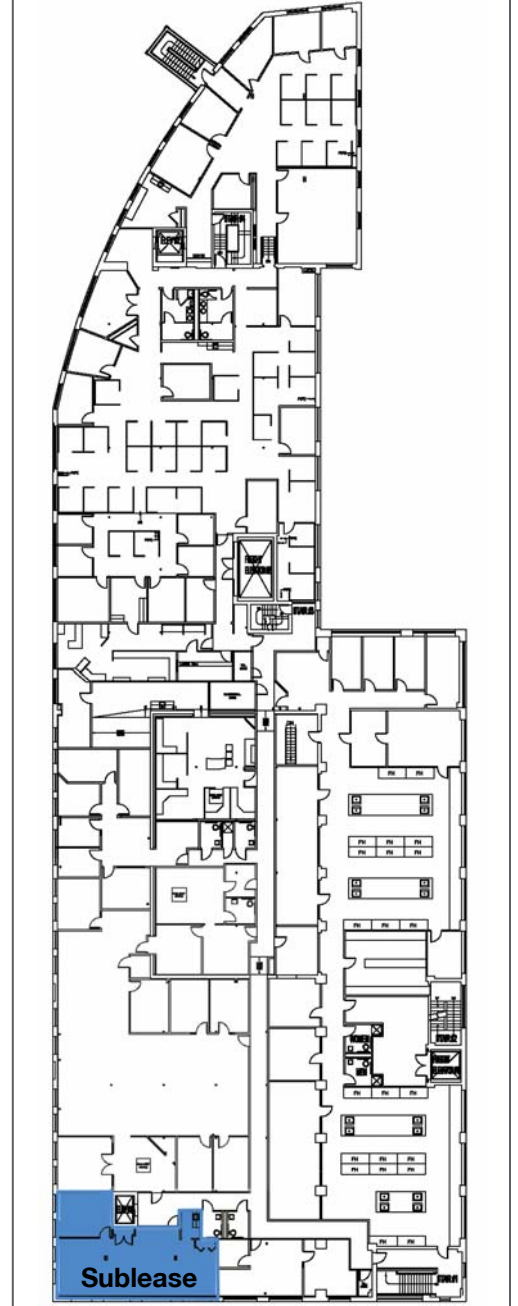
56 ROLAND STREET | CHARLESTOWN

1,358 RSF available for sublease

AVAILABLE SPACE



3RD FLOOR



Commercial Real Estate Services, Worldwide.

All information furnished regarding property for sale or lease is from sources deemed reliable, but no warranty or representation is made as to the accuracy thereof and same is submitted subject to errors, omissions, change of price, rental or other conditions prior to sale or lease, or withdrawal without notice.

Bonny L. Doorakian, Senior Associate | 617.457.3317 | bdoorakian@naihunneman.com

303 Congress Street | Boston, MA 02210 | 617.457.3400 | www.naihunneman.com

contact information