

# FOR SALE OR LEASE

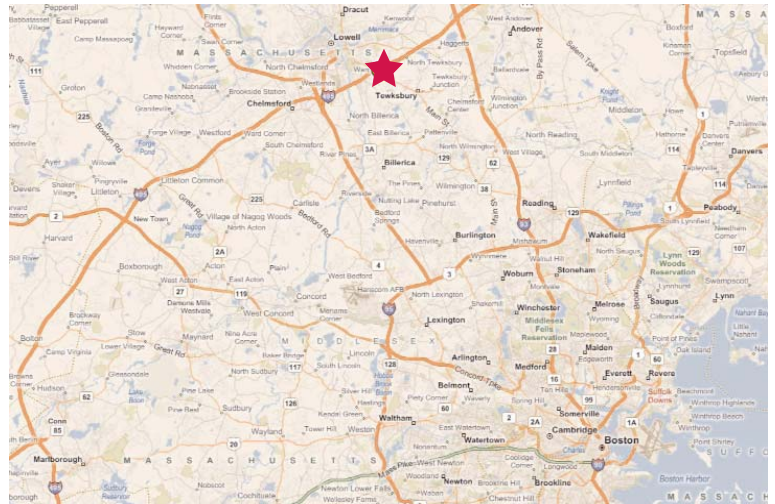
## 558 Clark Road | Tewksbury, MA



### Building Specifications

**Available Space:** 88,873 SF  
**Land Area:** 7.1 Acres  
**Construction:** 2003  
**Building Type:** +/- 42,625 SF cooler distribution, 17,488 SF office, 10,550 SF truck route loading, +/- 18,272 SF of dry warehouse  
**Construction:** Tilt-up  
**Ceiling Height:** 30' in warehouse  
**Utilities:** Public water and sewer  
**Floor Load Capacity:** 4,000 PSI  
**Loading:** 18 Docks  
**Building Power:** 1,200 amp, 277/480 volt, 3 phase  
**Zoning:** Heavy Industrial  
**Parking:** 90 parking spaces

**88,873 SF AVAILABLE**  
**COOLER DISTRIBUTION FACILITY**



### contact information

Michael McCarthy, Vice President | 617 457 3224 | [mmccarthy@naihunneman.com](mailto:mmccarthy@naihunneman.com)

David Gilkie, Senior Vice President | 617 457 3202 | [dgilkie@naihunneman.com](mailto:dgilkie@naihunneman.com)

303 Congress Street | Boston, MA 02210 | 617 457 3400 | [www.naihunneman.com](http://www.naihunneman.com)

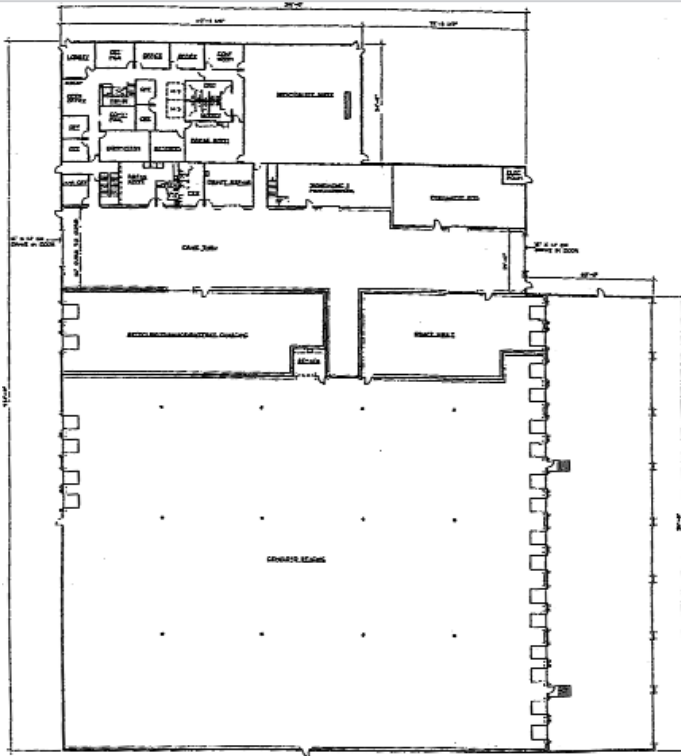


Commercial Real Estate Services, Worldwide.

All information furnished regarding property for sale or lease is from sources deemed reliable, but no warranty or representation is made as to the accuracy thereof and same is submitted subject to errors, omissions, change of price, rental or other conditions prior to sale or lease, or withdrawal without notice.

# 558 CLARK ROAD | TEWKSBURY, MA

Ideally located, state-of-the-art facility



## PROPERTY HIGHLIGHTS 558 CLARK ROAD

Constructed in 2003 by the D.J. Reardon Co, Inc. for beer and wine distribution, 558 Clark Road is a state-of-the-art facility ideally located at the intersection of Routes of 495 and 38.



### contact information

Michael McCarthy, Vice President | 617 457 3224 | [mmccarthy@naihunneman.com](mailto:mmccarthy@naihunneman.com)

David Gilkie, Senior Vice President | 617 457 3202 | [dgilkie@naihunneman.com](mailto:dgilkie@naihunneman.com)

303 Congress Street | Boston, MA 02210 | 617 457 3400 | [www.naihunneman.com](http://www.naihunneman.com)



Commercial Real Estate Services, Worldwide.

All information furnished regarding property for sale or lease is from sources deemed reliable, but no warranty or representation is made as to the accuracy thereof and same is submitted subject to errors, omissions, change of price, rental or other conditions prior to sale or lease, or withdrawal without notice.