

51 MORGAN DRIVE | NORWOOD, MA



Unit 11 - 3,600 SF
Office/Warehouse Space
Available Immediately for Lease

contact information

Cathy Minnerly, Executive Vice President | 617 457 3334 | cminnerly@naihunneman.com

Ovar Osvold, Associate | 617 457 3222 | osvold@naihunneman.com

303 Congress Street | Boston, MA 02210 | 617 457 3400 | www.naihunneman.com

NAIHunneman

Commercial Real Estate Services, Worldwide.

All information furnished regarding property for sale or lease is from sources deemed reliable, but no warranty or representation is made as to the accuracy thereof and same is submitted subject to errors, omissions, change of price, rental or other conditions prior to sale or lease, or withdrawal without notice.

51 MORGAN DRIVE | NORWOOD

Unit 11 - 3,600 SF

SPECIFICATIONS:

TOTAL SIZE	63,080 SF	UTILITIES	Gas:	NStar (separately metered)
AVAILABLE SPACE	3,600 SF		Electricity:	Norwood Municipal Light Department (separately metered)
AVAILABLE	Immediately		Water/Sewer:	Town of Norwood
PROPERTY TYPE	Office/warehouse/distribution			
LAND AREA	4.0 acres			
ZONING	Limited manufacturing	TAXES/CAM		\$1.34/SF / \$1.30/SF (FY 2010)
CLEAR HEIGHT	19'	LEASE RATE		\$8.95/SF NNN
HVAC	Office area	LOCATION		Located just off Route 1, minutes from I-95 and Route 128
LOADING	One tailboard			
PARKING	Ample			
SPRINKLERS	Wet sprinkler system			
POWER	100 amp, 120/240 volt, 3-phase			

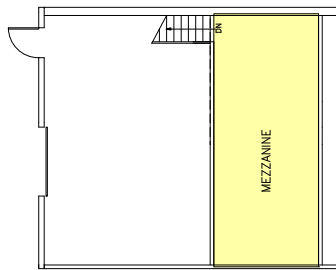
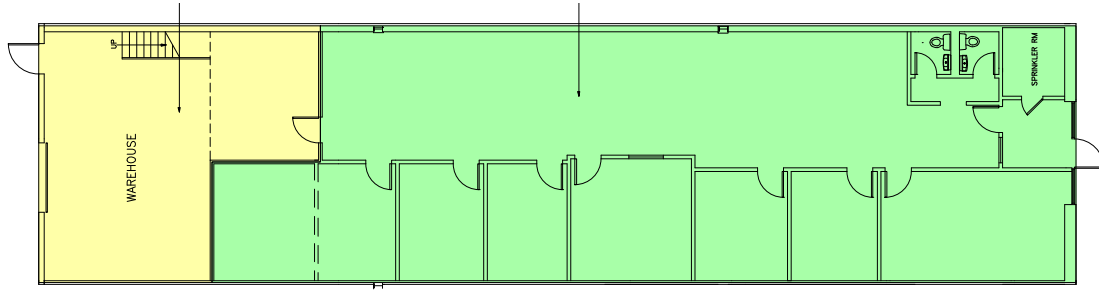
DOCKS



51 MORGAN DRIVE | NORWOOD

Office/Warehouse Space

FLOOR PLAN



MEZZANINE
356 +/- SQ. FT.

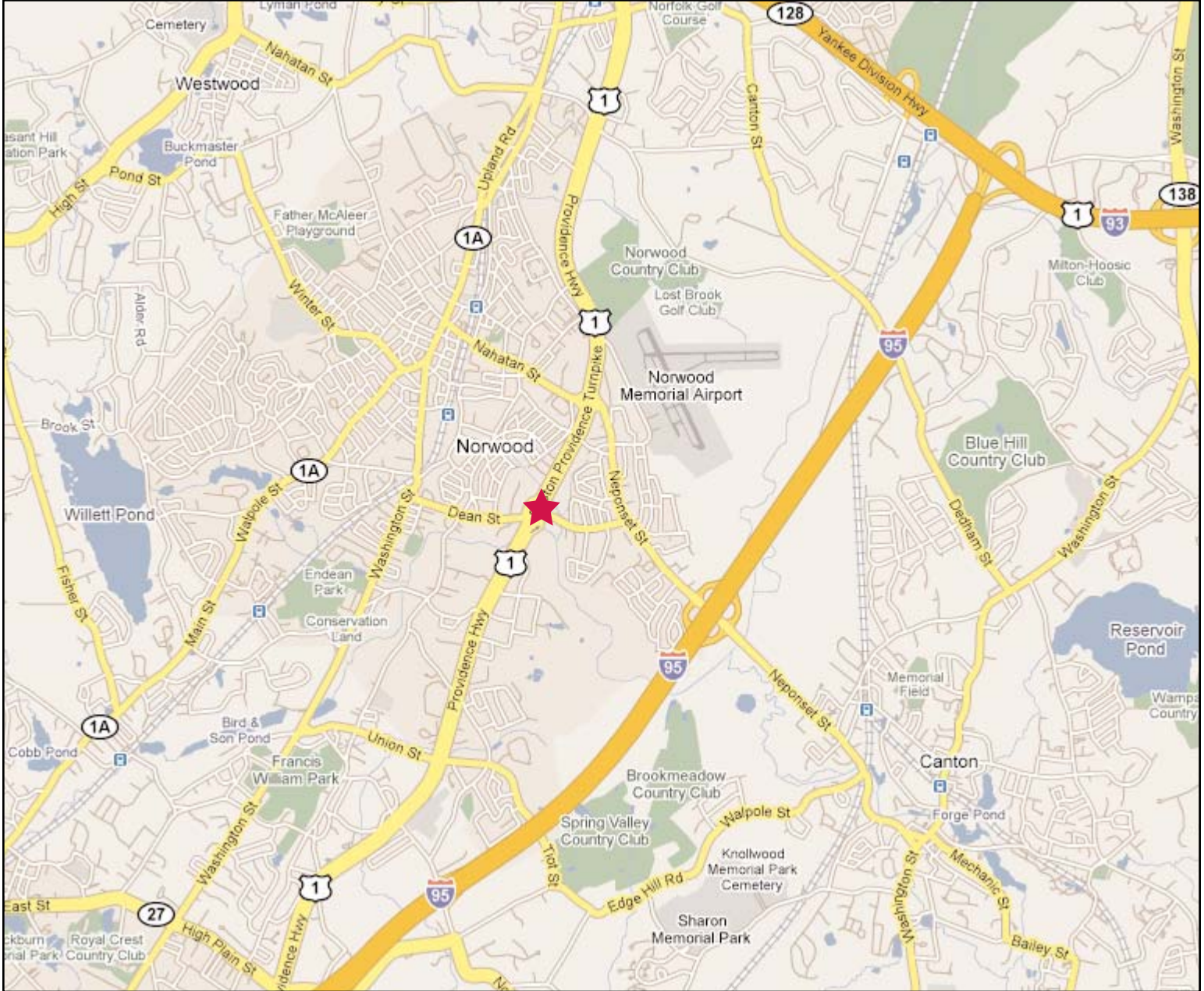
Unit 11
51 Morgan Drive
Norwood, MA
Not to Scale
March 4, 2011

AERIAL



51 MORGAN DRIVE | NORWOOD

3,600 SF Available for Lease



contact information



Cathy Minnerly, Executive Vice President | 617 457 3334 | cminnerly@naihunneman.com

Ovar Osvold, Associate | 617 457 3222 | oosvold@naihunneman.com

303 Congress Street | Boston, MA 02210 | 617 457 3400 | www.naihunneman.com

Commercial Real Estate Services, Worldwide.

All information furnished regarding property for sale or lease is from sources deemed reliable, but no warranty or representation is made as to the accuracy thereof and same is submitted subject to errors, omissions, change of price, rental or other conditions prior to sale or lease, or withdrawal without notice.