

500 TURNPIKE STREET | CANTON, MA



50,000 SF of Office Space (Subdividable)
For Sale or Lease



Commercial Real Estate Services, Worldwide.

All information furnished regarding property for sale or lease is from sources deemed reliable, but no warranty or representation is made as to the accuracy thereof and same is submitted subject to errors, omissions, change of price, rental or other conditions prior to sale or lease, or withdrawal without notice.

contact information

Cathy Minnerly, Executive Vice President | 617 457 3334 | cminnerly@naihunneman.com

J.P. Plunkett, Executive Vice President | 617 457 3230 | jplunkett@naihunneman.com

Ovar Osvold, Associate | 617 457 3222 | oosvold@naihunneman.com

303 Congress Street | Boston, MA 02210 | 617 457 3400 | www.naihunneman.com

500 TURNPIKE STREET | CANTON

50,000 SF OF OFFICE SPACE (Subdividable)

BUILDING SPECIFICATIONS:

Total SF	50,000 SF	Utilities	
Available SF	50,000 SF(Subdividable)	<i>Gas</i>	Bay State Gas
Property Type	Office	<i>Electric</i>	NStar
Land Area	9.28 acres	<i>Water/Sewer</i>	Town of Canton
Year Built/Renovated	1970/2007	R.E. Tax	\$0.75/SF (FY 2011)
Construction	Masonry	Available	Immediately
Sprinklers	Full Sprinkler System	Lease Rate	\$10.00/SF NNN
HVAC	Complete high efficiency heat & air conditioning boasting 66 zones.HVACis programable from a centralized computer	Sale Price	\$5,000,000
Zoning	I, Canton	Location	Located on Route 138 only 2.4 miles off Exit 2 on Interstate 93 with access to Route 24 and Interstate 95.
Parking	4 spaces/1,000 SF		
Power	3,000 amp, 3 phase, 277/480 Volt		

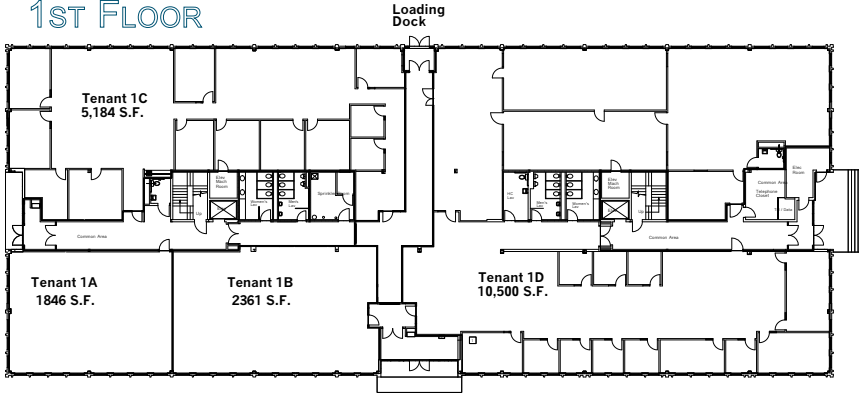


500 TURNPIKE STREET | CANTON

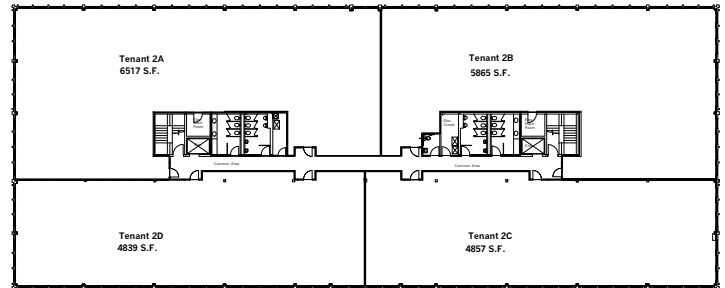
FOR SALE OR LEASE (Subdividable)

FLOOR PLANS

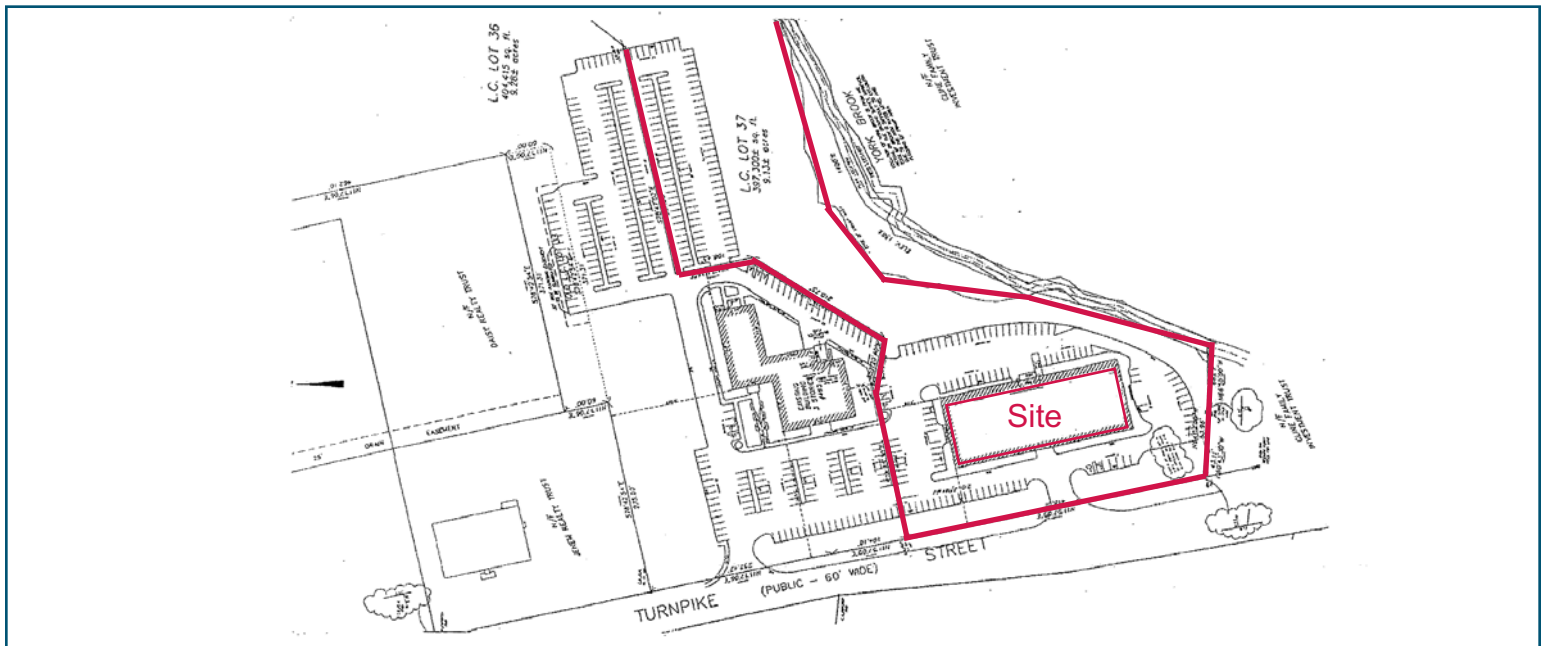
1ST FLOOR



2ND FLOOR



SITE PLAN



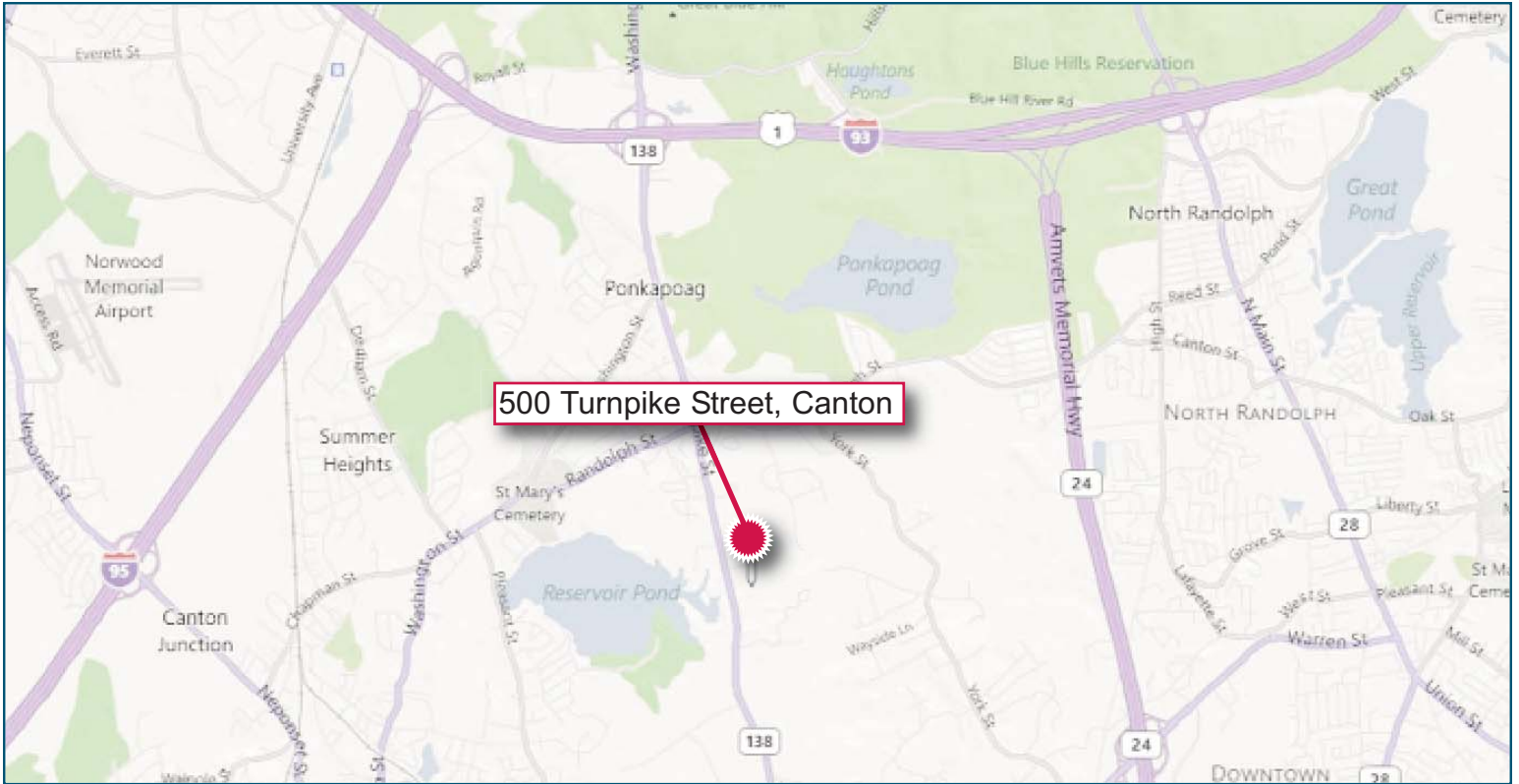
Commercial Real Estate Services, Worldwide.

303 Congress Street | Boston, MA 02210 | 617 457 3400 | www.naihunneman.com

All information furnished regarding property for sale or lease is from sources deemed reliable, but no warranty or representation is made as to the accuracy thereof and same is submitted subject to errors, omissions, change of price, rental or other conditions prior to sale or lease, or withdrawal without notice.

500 TURNPIKE STREET | CANTON

50,000 SF of Office Space (Subdividable)



contact information

Cathy Minnerly, Executive Vice President | 617 457 3334 | cminnerly@naihunneman.com

J.P. Plunkett, Executive Vice President | 617 457 3230 | jplunkett@naihunneman.com

Ovar Osbold, Associate | 617 457 3222 | osbold@naihunneman.com



Commercial Real Estate Services, Worldwide.

All information furnished regarding property for sale or lease is from sources deemed reliable, but no warranty or representation is made as to the accuracy thereof and same is submitted subject to errors, omissions, change of price, rental or other conditions prior to sale or lease, or withdrawal without notice.