

PINE VALLEY MILL - SPACE AVAILABLE



**37 WILTON ROAD
MILFORD, NH**

Building Area: 70,000 SF on three floors

Space Available: Up to 40,000 SF

Stories: 2 and 3

Use: Office, R&D, light assembly

Utilities: Sewer, water

Heat: Oil

HVAC: Fully air-conditioned throughout

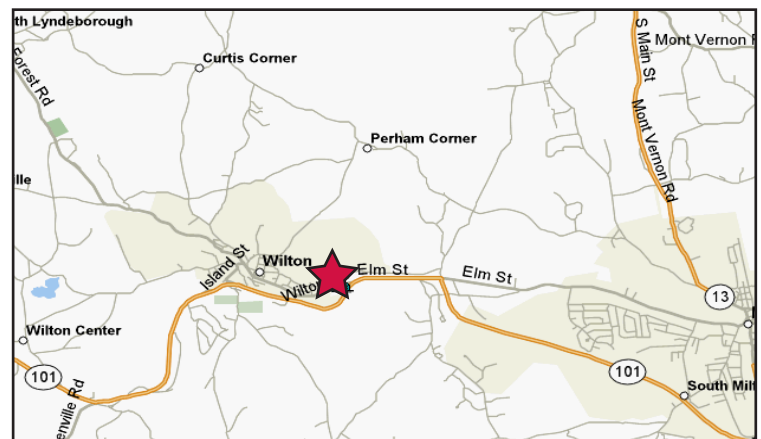
Docks: Both dock and ground-loading facilities are available.

Parking: 160 on-site spaces with ample free parking in adjacent lot

Additional Available

Land: 24 acres

37 Wilton Road is a 70,000 RSF, 2- and 3-story facility available for immediate occupancy. The building can be utilized for office, R&D or light assembly purposes. The building houses a hydro turbine generator with annual income. Details available upon request.



To learn more please contact:

Chip Denton

Senior Vice President

Phone: 508.523.4815

chipdenton_naihunneman@comcast.net

All information furnished regarding property for sale or lease is from sources deemed reliable, but no warranty or representation is made as to the accuracy thereof and same is submitted subject to errors, omissions, change of price, rental or other conditions prior to sale or lease, or withdrawal without notice.



Commercial Real Estate Services, Worldwide.

303 Congress Street

Boston MA 02210

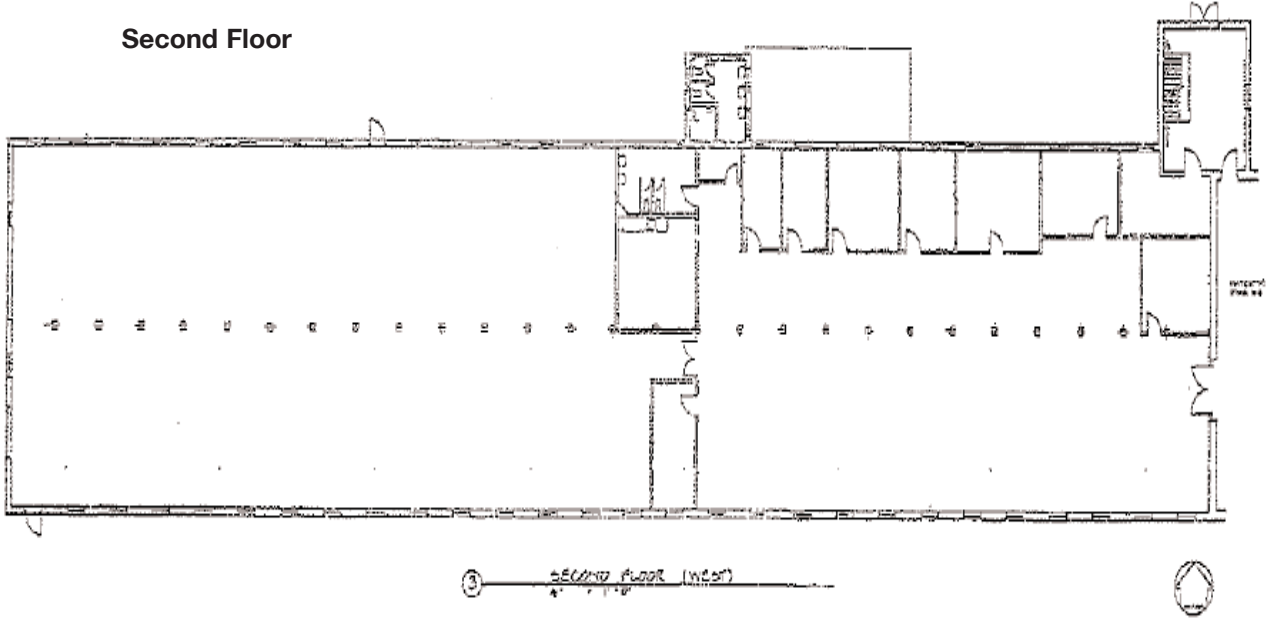
T: 617.457.3400

www.naihunneman.com

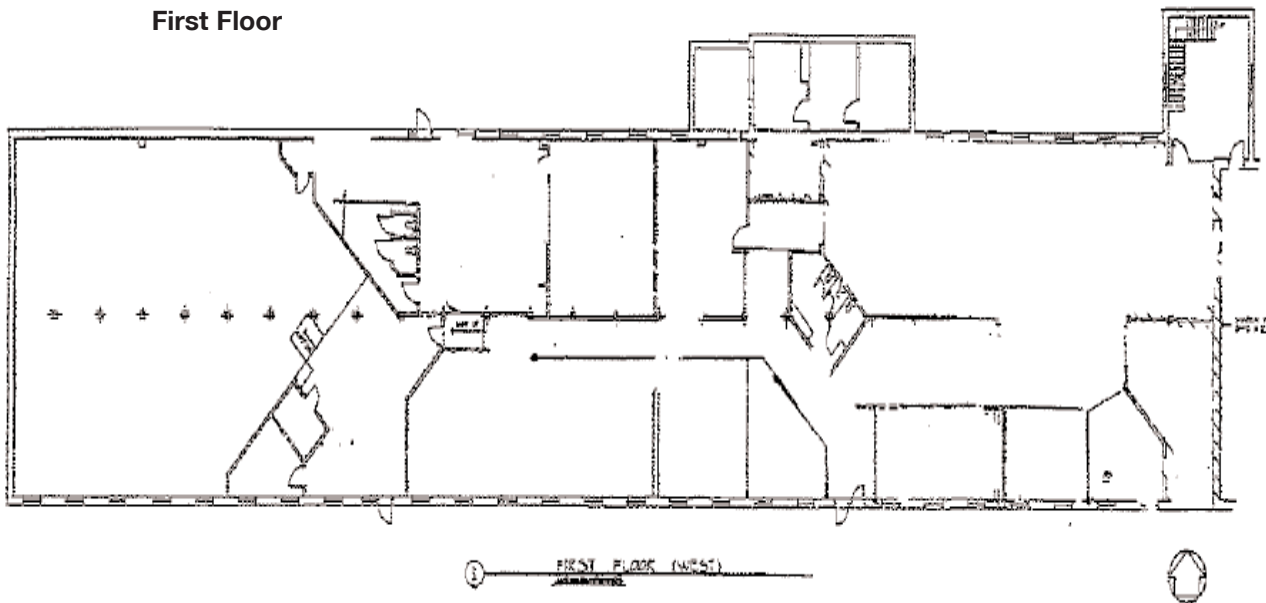
**Pine Valley Mill
37 Wilton Road
Milford, NH
Space Lease**



Second Floor



First Floor



To learn more please contact:

Chip Denton
Senior Vice President
Phone: 508.523.4815
chipdenton_naihunneman@comcast.net