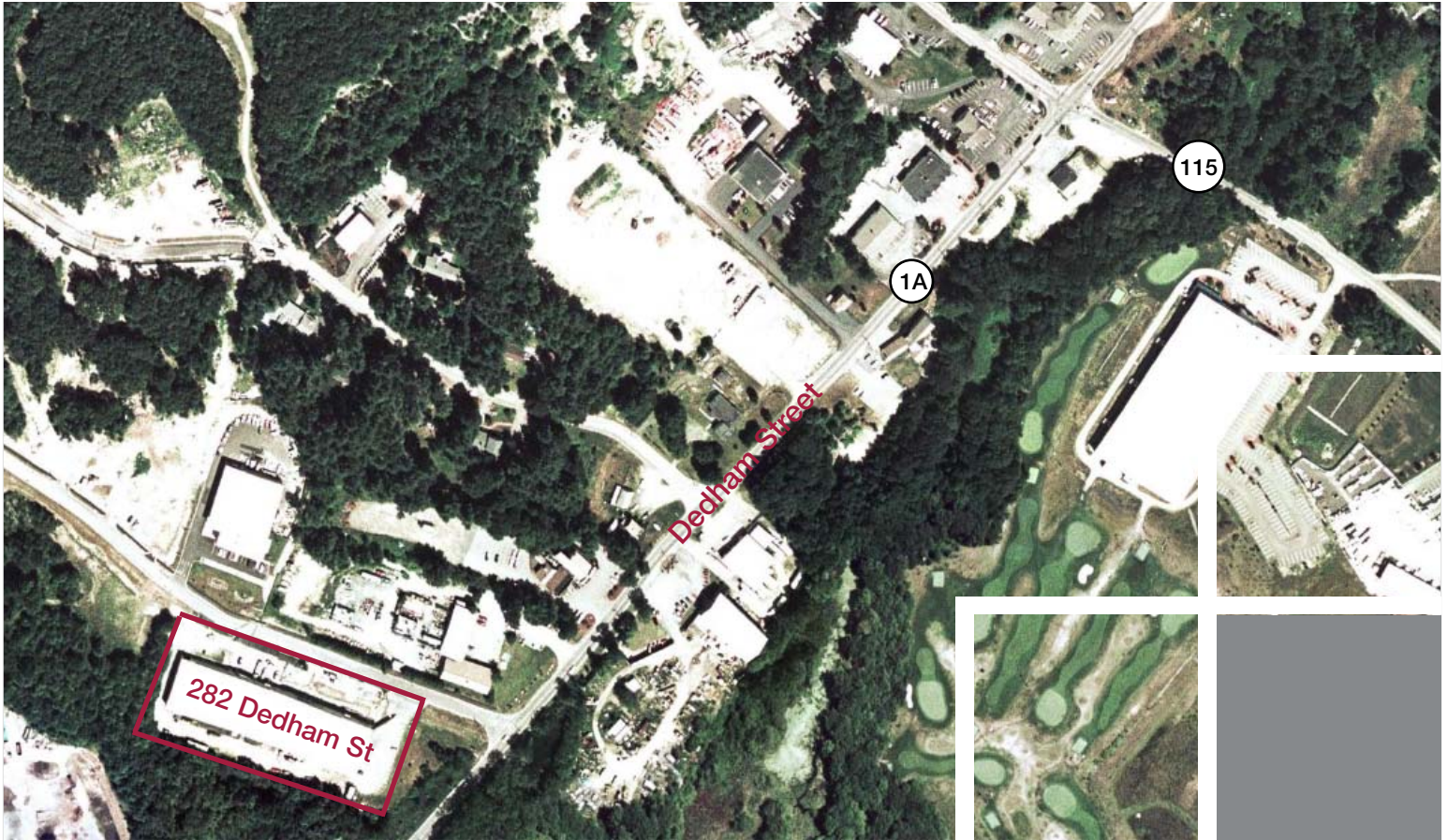


282 DEDHAM STREET | NORFOLK, MA

14,000 SF up to 34,000 SF for Lease



SPECIFICATIONS:

TOTAL SIZE	40,000 SF	POWER	2-200 amps, 3-phase
AVAILABLE SPACE	14,000 SF (up to 34,000 SF can potentially be made available)	LIGHTING	Strip fluorescent and T5 lighting
AVAILABLE	Immediately	UTILITIES	Gas: Bay State Electric: NSTAR Water: Private septic Sewer: Town of Norfolk
LAND AREA	7 acres	LEASE RATE	\$5.25/SF NNN
PROPERTY TYPE	Office/Warehouse	TAXES & CAM	±\$1.25/SF
ZONING	Industrial	OUTSIDE STORAGE	Allowed
PARKING	Surface spaces for 55 vehicles	LOCATION	<ul style="list-style-type: none"> • Approximately one mile off Route 1 • Less than 4 miles from I-495 • Less than 6 miles from I-95 • 30 miles from Boston • 25 miles from Providence • Two miles from Patriot Place
CLEAR HEIGHT	18' - 23' clear ceiling height		
COLUMN SPACING	20' x 50'		
LOADING	2 loading docks, 2 drive-in doors		
CONSTRUCTION	Steel frame structure with metal siding		

contact information



Commercial Real Estate Services, Worldwide.

All information furnished regarding property for sale or lease is from sources deemed reliable, but no warranty or representation is made as to the accuracy thereof and same is submitted subject to errors, omissions, change of price, rental or other conditions prior to sale or lease, or withdrawal without notice.

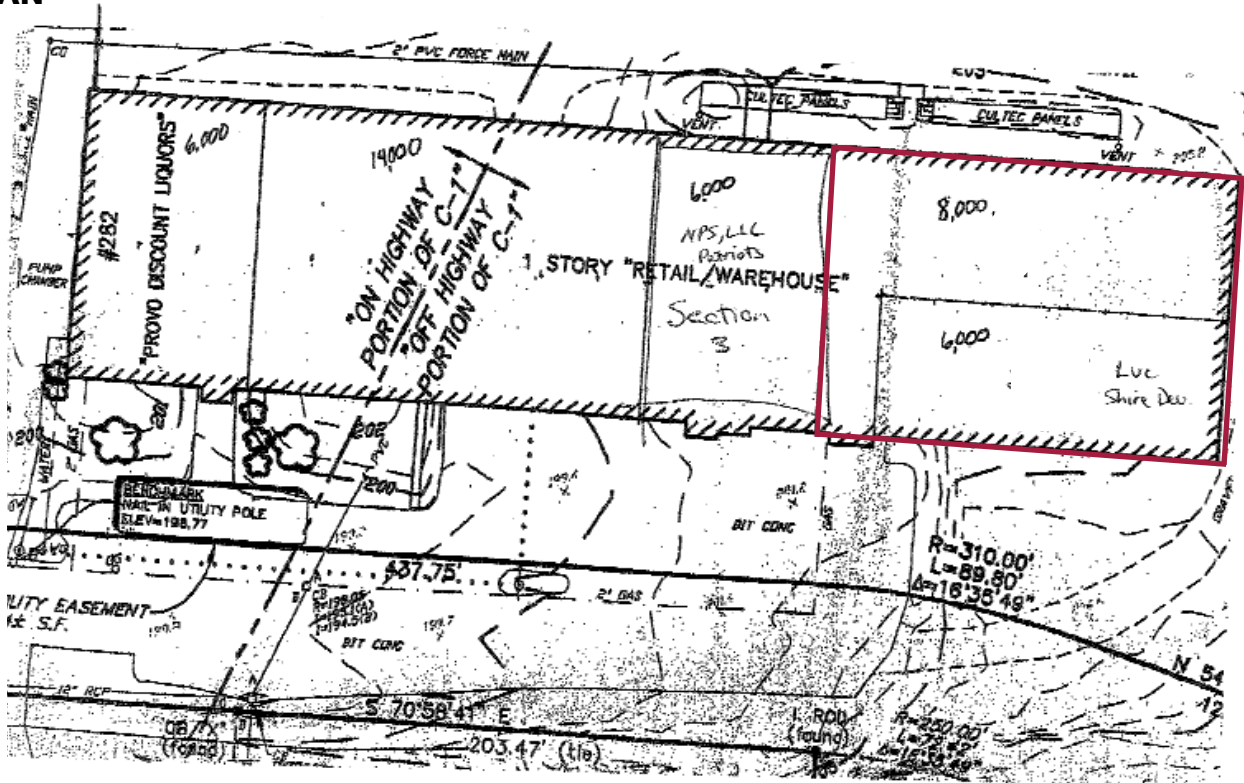
Cathy Minnerly, Executive Vice President | 617 457 3334 | cminnerly@naihunneman.com

Neil Sogard, Associate | 617 457 3304 | nsogard@naihunneman.com

303 Congress Street | Boston, MA 02210 | 617 457 3400 | www.naihunneman.com

282 DEDHAM STREET | NORFOLK Office/Warehouse Space

SITE PLAN



contact information



Commercial Real Estate Services, Worldwide.

All information furnished regarding property for sale or lease is from sources deemed reliable, but no warranty or representation is made as to the accuracy thereof and same is submitted subject to errors, omissions, change of price, rental or other conditions prior to sale or lease, or withdrawal without notice.

Cathy Minnerly, Executive Vice President | 617 457 3334 | cminnerly@naihunneman.com

Neil Sogard, Associate | 617 457 3304 | nsogard@naihunneman.com

303 Congress Street | Boston, MA 02210 | 617 457 3400 | www.naihunneman.com