

OFFICE SPACE FOR SUBLEASE

215 First Street | East Cambridge, MA

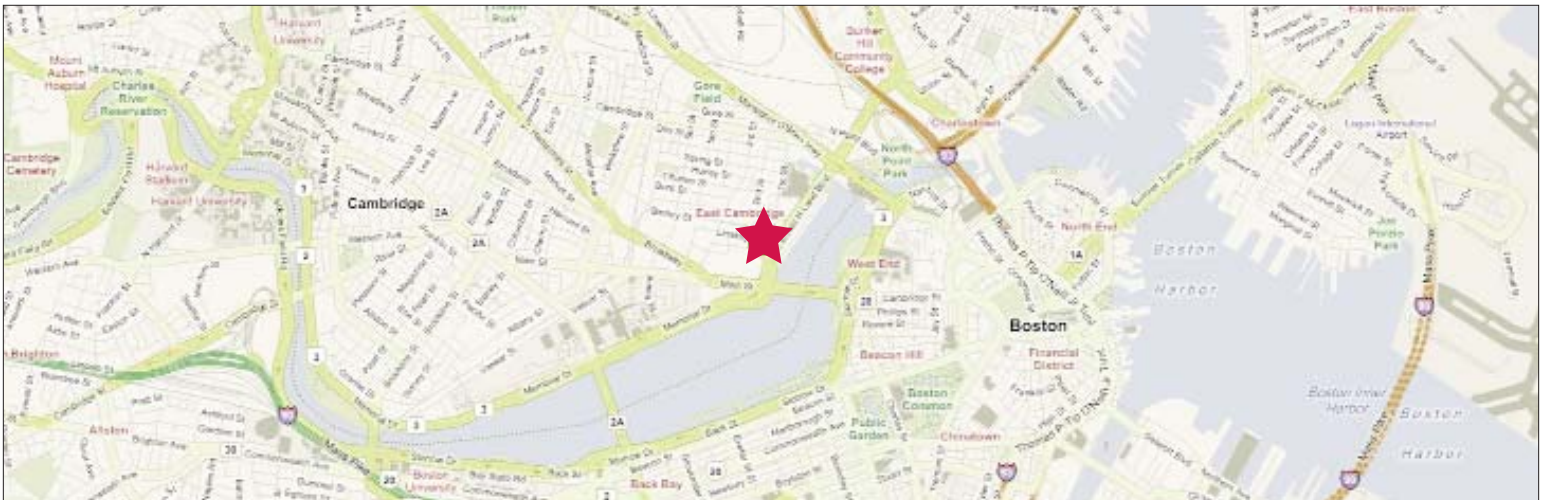
\$19.50/RSF
\$50 Amex For Showings



Grab a plug'n'play corner suite in an East Cambridge icon: The historic Athenaeum House.

- **Building Size:** 380,000 SF
- **Available Space:**
 - 4,575 RSF corner suite on the Lower Level
 - Layout includes 6 private offices, kitchenette, conference and server rooms.
- **Asking Rate:** \$19.50/RSF
- **Availability:** Immediate
- **Term:** Through August 31, 2013
- **Cabling:** CAT 5e and T1 WAN
- **Parking:** 4 spaces in the surface lot at market rate, currently \$195/month/space
- **Amenities:**
 - Impressive dedicated conference/meeting facility on lobby level
 - Fine dining for lunch or dinner at Technique restaurant
 - Cambridge Athletic Club in building
 - Located halfway between Kendall Red Line and Lechmere Green Line MBTA

EAST CAMBRIDGE
PLUG'N'PLAY SUBLEASE



NAI Hunneman

Commercial Real Estate Services, Worldwide.

All information furnished regarding property for sale or lease is from sources deemed reliable, but no warranty or representation is made as to the accuracy thereof and same is submitted subject to errors, omissions, change of price, rental or other conditions prior to sale or lease, or withdrawal without notice.

contact information

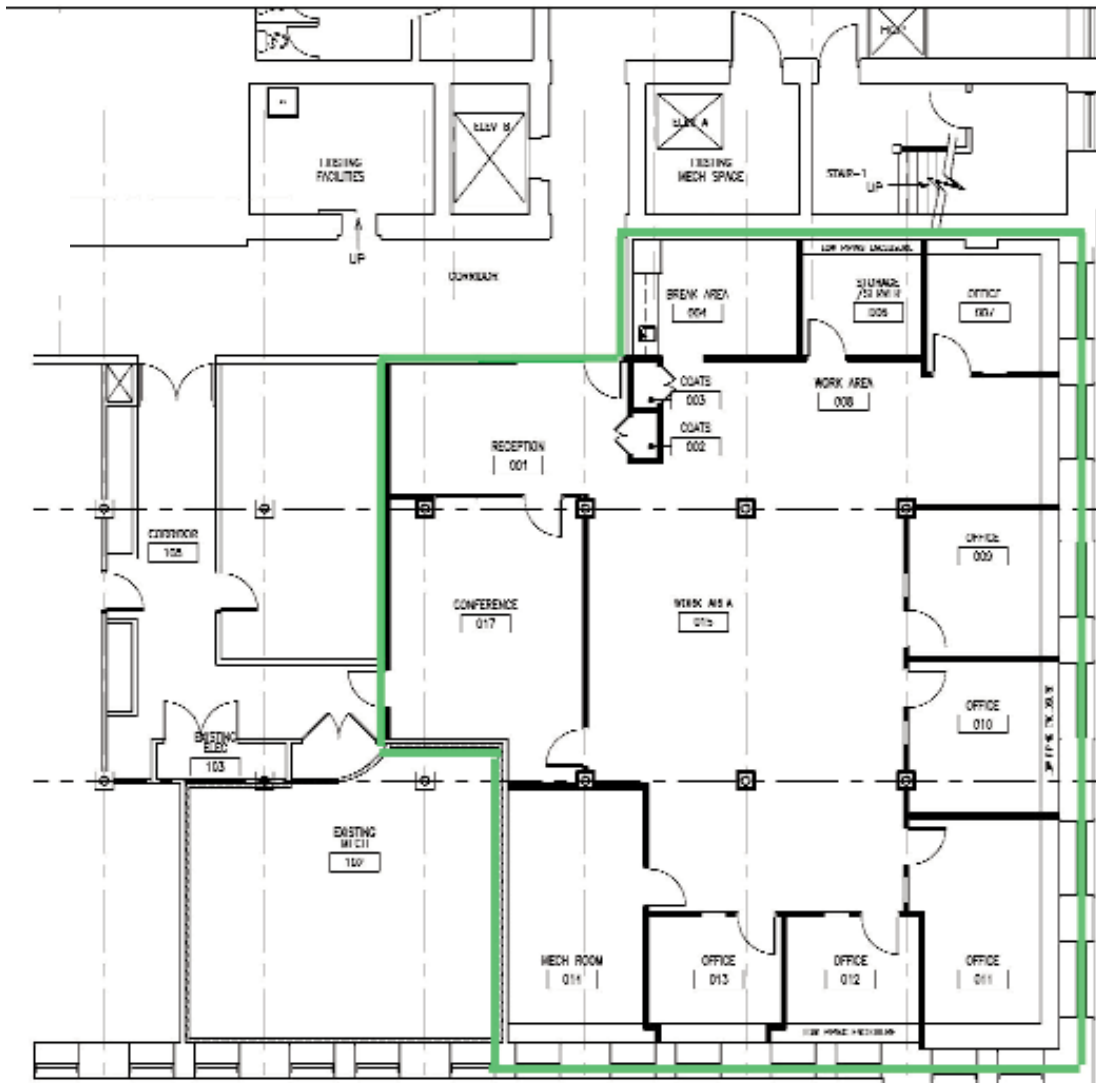
Greg Larsen, Senior Vice President | 617 457 3321 | glarsen@naihunneman.com

303 Congress Street | Boston, MA 02210 | 617 457 3400 | www.naihunneman.com

215 FIRST STREET | CAMBRIDGE, MA

4,575 SF of Office Space Available

Floor Plan



NAI Hunneman

Commercial Real Estate Services, Worldwide.

All information furnished regarding property for sale or lease is from sources deemed reliable, but no warranty or representation is made as to the accuracy thereof and same is submitted subject to errors, omissions, change of price, rental or other conditions prior to sale or lease, or withdrawal without notice.

Greg Larsen, Senior Vice President | 617 457 3321 | glarsen@naihunneman.com

303 Congress Street | Boston, MA 02210 | 617 457 3400 | www.naihunneman.com

contact information