

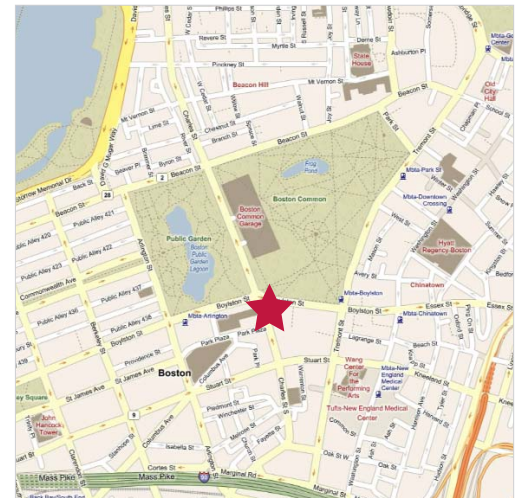
# OFFICE SPACE FOR LEASE

## 2 Park Plaza | Boston, MA



### Available Space

- **Building Size:** 35,700 SF on 7 floors
- **Available Space:** 10,442 RSF on floors 6 & 7
- **Rental Rate:** \$30.00/RSF
- **Amenities:**
  - Adjacent to the Four Seasons Hotel and Condominiums.
  - Directly opposite the Public Gardens and Boston Common, within walking distance of both Downtown Crossing and Back Bay.
  - Ample parking nearby and within steps to public transportation.

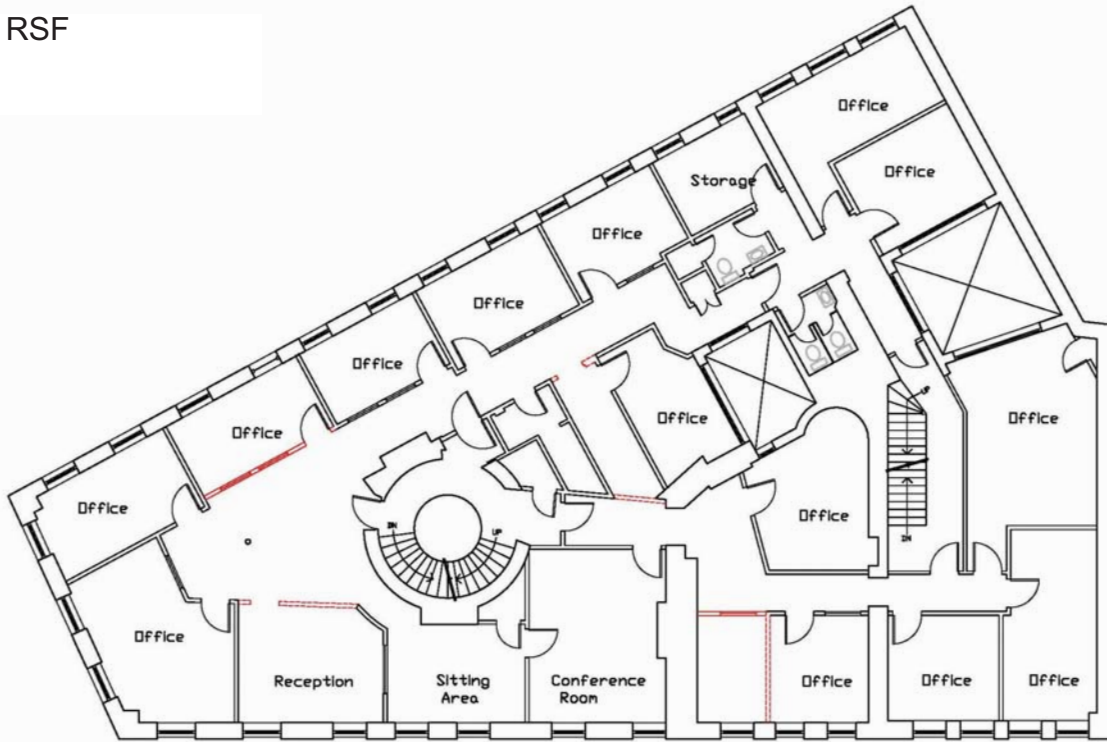


TOP TWO **PENTHOUSE** FLOORS  
AVAILABLE AT 5,200 RSF APIECE

# 2 PARK PLAZA | BOSTON, MA

## Located in the Heart of Back Bay

6th Floor: 5,200 RSF



7th Floor: 5,200 RSF

