

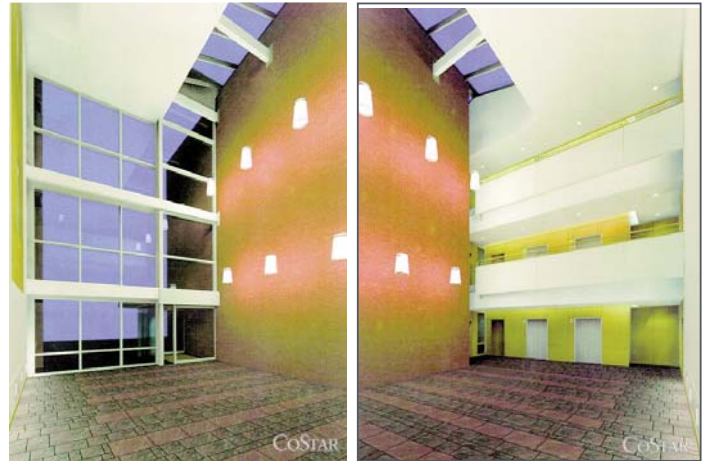
# FOR SUBLEASE

## 181 Spring Street | Lexington



### Building Specs

- Fully furnished, plug and play opportunity
- Class A three story building
- Reserved covered parking
- Server room with back-up generator and 21 KVA UPS
- Two private kitchenette areas within space
- Close to Logan International Airport and hotels



**SUBLEASE **PLUG & PLAY** OFFICE SPACE  
IN PRIME LOCATION!**

**NAI**Hunneman

Commercial Real Estate Services, Worldwide.

### contact information

Stephen A. James, Executive VP | 617 457 3263 | [sjames@naihunneman.com](mailto:sjames@naihunneman.com)

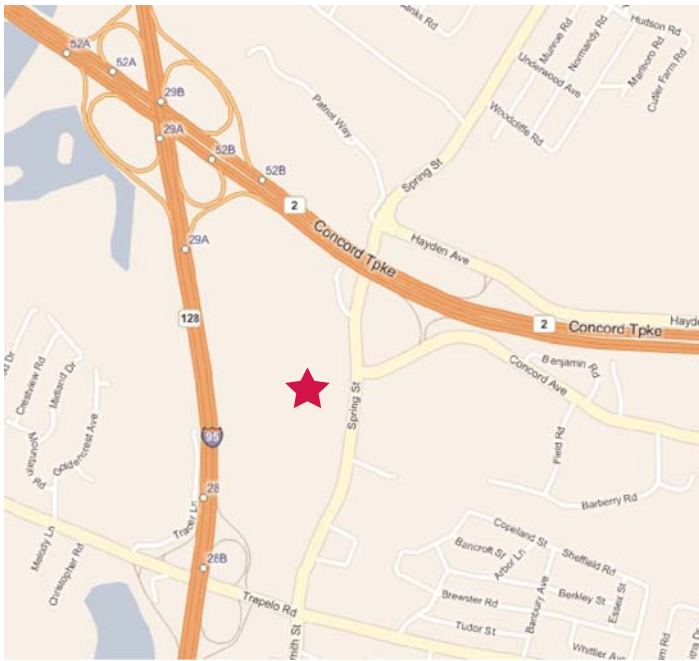
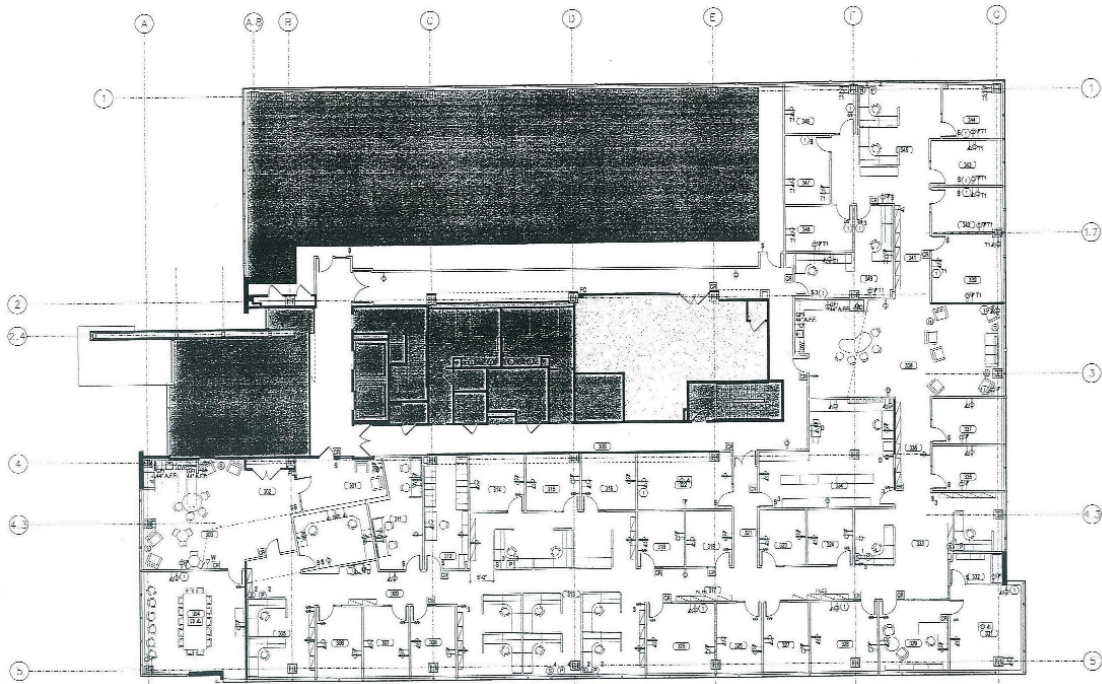
Brendan Daly, Assistant VP | 617 457 3281 | [bdaly@naihunneman.com](mailto:bdaly@naihunneman.com)

303 Congress Street | Boston, MA 02210 | 617 457 3400 | [www.naihunneman.com](http://www.naihunneman.com)

All information furnished regarding property for sale or lease is from sources deemed reliable, but no warranty or representation is made as to the accuracy thereof and same is submitted subject to errors, omissions, change of price, rental or other conditions prior to sale or lease, or withdrawal without notice.

# 181 SPRING STREET | LEXINGTON

16,384 SF of Office Space



Excellent Location

Near intersection of  
route 2 and 95/128

Less than a half  
hour from Boston

Shuttle to Alewife  
Station



Commercial Real Estate Services, Worldwide.

All information furnished regarding property for sale or lease is from sources deemed reliable, but no warranty or representation is made as to the accuracy thereof and same is submitted subject to errors, omissions, change of price, rental or other conditions prior to sale or lease, or withdrawal without notice.

## contact information

Stephen A James, Executive VP | 617 457 3263 | [sjames@naihunneman.com](mailto:sjames@naihunneman.com)

Brendan Daly, Assistant VP | 617 457 3281 | [bdaly@naihunneman.com](mailto:bdaly@naihunneman.com)

303 Congress Street | Boston, MA 02210 | 617 457 3400 | [www.naihunneman.com](http://www.naihunneman.com)