

FOR SUBLEASE

159 Overland Road | Waltham



BUILDING INFORMATION

Building Size: 41,116 SF
Available SF: Third Floor: 13,388 RSF
Second Floor: 13,388 RSF
First Floor: 2,233 RSF
Property Type: Office
HVAC: Fully air conditioned
Elevator: One passenger
Parking: Garage parking, 2.18/1,000 SF
Utilities: *Electric:* NSTAR
Water: City of Waltham
Sewer: City of Waltham

FEATURES

- Building signage available
- Variety of hard walled offices, conference rooms, and open space
- 1,100 SF of storage space on the lower level
- Lunch area on the second floor

**JUST OFF ROUTE 128/I-95
NEARBY I-90 AND ROUTE 2**

Less than a half hour
from Boston and
Logan International Airport

Five minutes from the
Waltham commuter rail station

Close to area shopping,
restaurants and hotels

contact information

David Gilkie, CCIM
617.457.3202
dgilkie@naihunneman.com



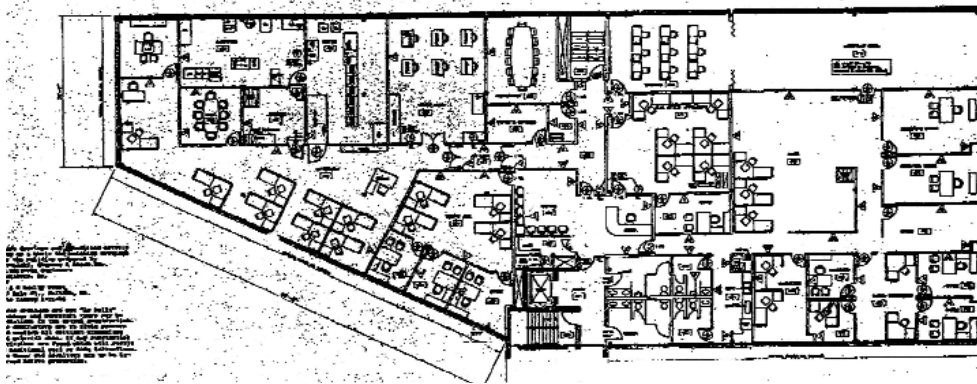
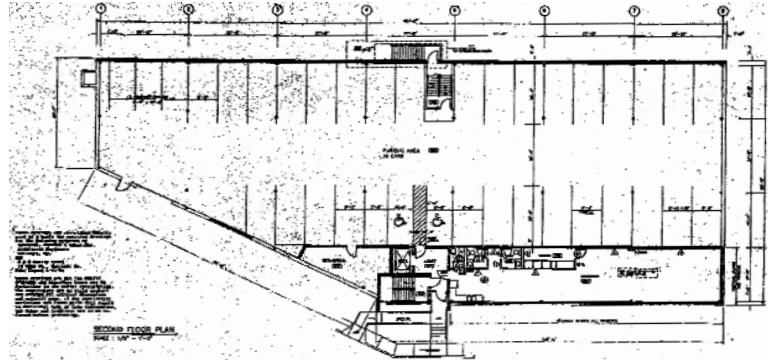
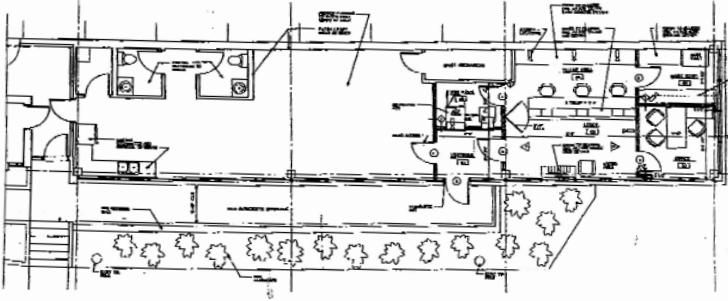
Commercial Real Estate Services, Worldwide.

303 Congress Street | Boston, MA 02210 | 617 457 3400 | www.naihunneman.com

All information furnished regarding property for sale or lease is from sources deemed reliable, but no warranty or representation is made as to the accuracy thereof and same is submitted subject to errors, omissions, change of price, rental or other conditions prior to sale or lease, or withdrawal without notice.

FOR SUBLEASE

159 Overland Road | Waltham



contact information

David Gilkie, CCIM

617.457.3202

dgilkie@naihunneman.com



Commercial Real Estate Services, Worldwide.

303 Congress Street | Boston, MA 02210 | 617 457 3400 | www.naihunneman.com

All information furnished regarding property for sale or lease is from sources deemed reliable, but no warranty or representation is made as to the accuracy thereof and same is submitted subject to errors, omissions, change of price, rental or other conditions prior to sale or lease, or withdrawal without notice.