

OFFICE SPACE FOR SUBLEASE

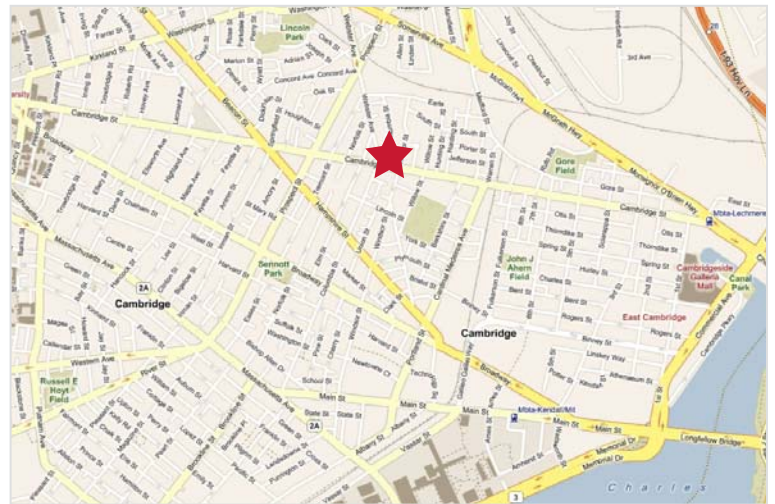
1035 Cambridge Street | Cambridge, MA



\$15.00/SF SUBLET RATE!
2,039 SF OFFICE SUITE
EAST/MID-CAMBRIDGE LOCATION

1035 Cambridge Street | Cambridge

- **Available Space:**
 - 2,039 SF on 1st Floor (sublease thru 11/30/11)
- **Asking Rate:** \$15.00/SF
- **Parking:** 2 parking spaces available in surface lot at \$150/month/space. Additional surface & garage parking next door at similar rates.
- **Public Transport:** #85 bus to Union or Kendall Square; #89 bus to Harvard Square or Lechmere.
- **Area Amenities:** Close to many Inman Square food and retail locations.



NAI Hunneman

Commercial Real Estate Services. Worldwide.

All information furnished regarding property for sale or lease is from sources deemed reliable, but no warranty or representation is made as to the accuracy thereof and same is submitted subject to errors, omissions, change of price, rental or other conditions prior to sale or lease, or withdrawal without notice.

Gregory Larsen, Senior Vice President | 617.457.3321 | glarsen@naihunneman.com

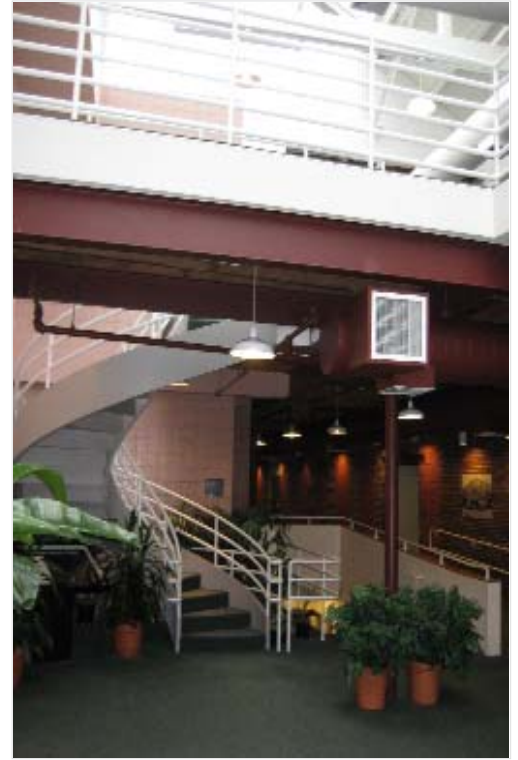
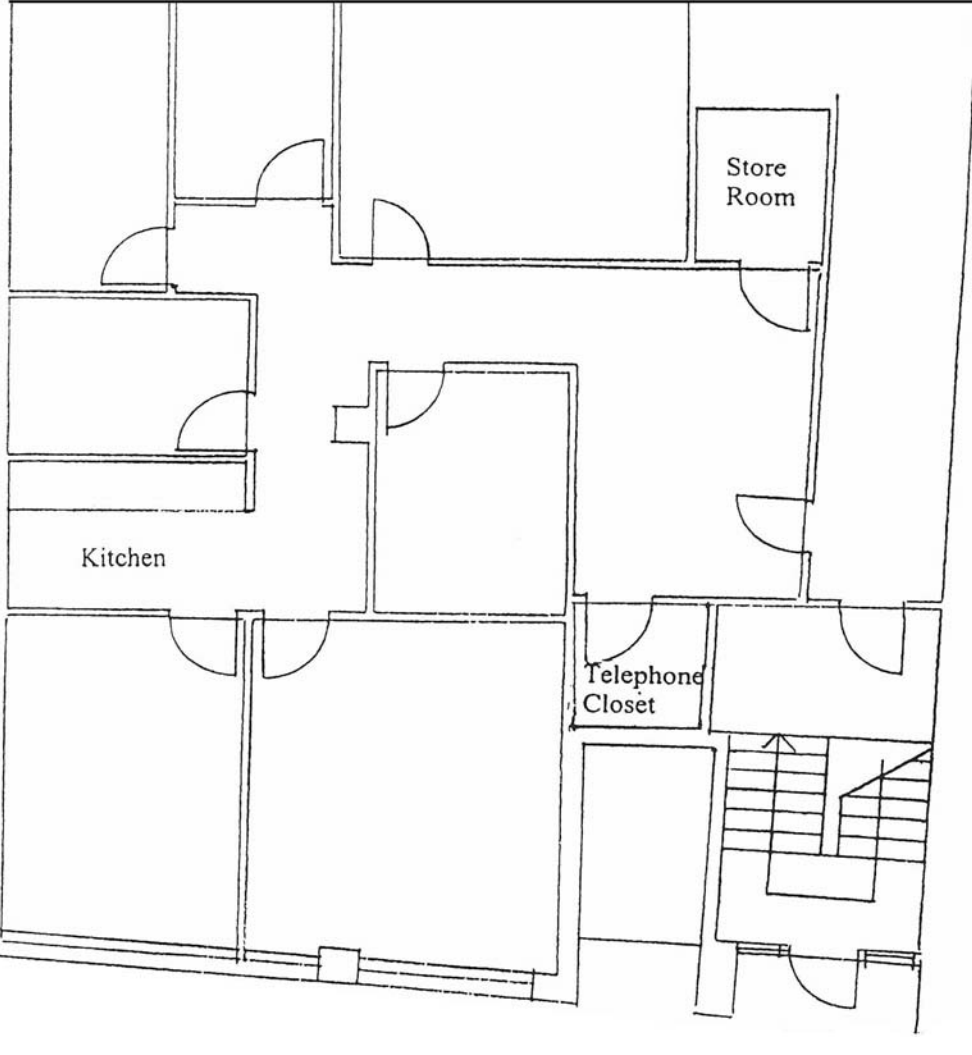
303 Congress Street | Boston, MA 02210 | 617.457.3400 | www.naihunneman.com

contact information

1035 CAMBRIDGE STREET

2,039 SF of office space for sublease

FIRST FLOOR | 2,039 SF



NAI Hunneman

Commercial Real Estate Services. Worldwide.

All information furnished regarding property for sale or lease is from sources deemed reliable, but no warranty or representation is made as to the accuracy thereof and same is submitted subject to errors, omissions, change of price, rental or other conditions prior to sale or lease, or withdrawal without notice.

Gregory Larsen, Senior Vice President | 617.457.3321 | glarsen@naihunneman.com

303 Congress Street | Boston, MA 02210 | 617.457.3400 | www.naihunneman.com

contact information