

MYLES STANDISH MEDICAL CENTER

NEW CONSTRUCTION FALL 2011



101 Industrial Park Rd
Located on I-495 at Entrance of
Myles Standish Industrial Park

2,025 SF up to 28,699 SF
Medical Suites
Available for Sale or Lease

contact information



Commercial Real Estate Services, Worldwide.

All information furnished regarding property for sale or lease is from sources deemed reliable, but no warranty or representation is made as to the accuracy thereof and same is submitted subject to errors, omissions, change of price, rental or other conditions prior to sale or lease, or withdrawal without notice.

Cathy Minnerly, Executive Vice President | 617 457 3334 | cminnerly@naihunneman.com

Ovar Osvold, Associate | 617 457 3222 | osvold@naihunneman.com

303 Congress Street | Boston, MA 02210 | 617 457 3400 | www.naihunneman.com

MYLES STANDISH MEDICAL CENTER

For Sale or Lease

SPECIFICATIONS:

Medical Suites

Available SF: 2,025 SF up to 28,699 SF
 Common Area: 4,979 SF (14.9%)
 Parking: 157 spaces (5.52/1,000 SF)

Myles Standish

Industrial Park: 805 acres
 7,400 employees
 200 acres for future development with ± 2,400 additional employees

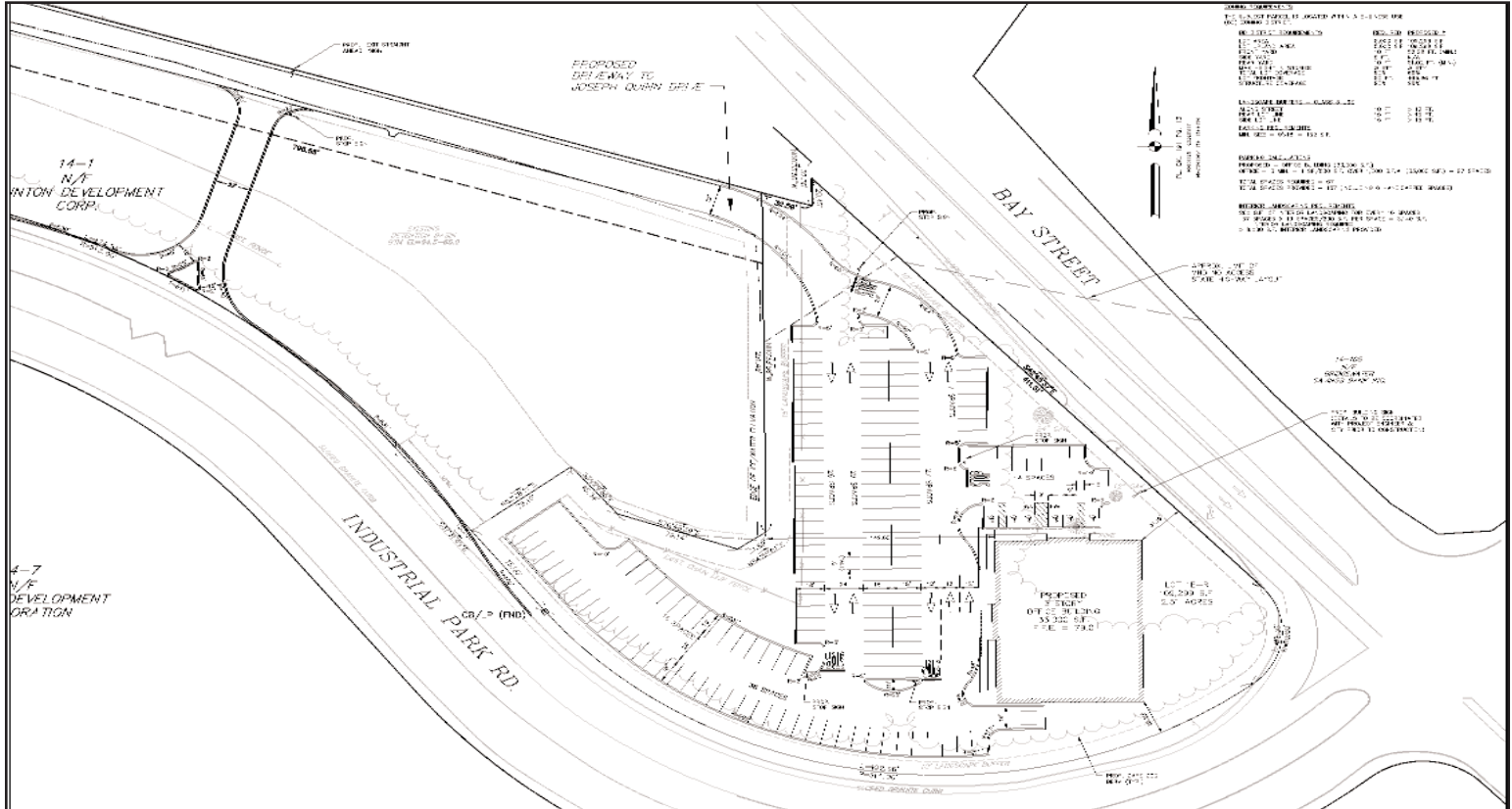
Utilities: - City water/sewer
 - Each utility will be separately metered for Gas & Electric (Billed Directly)

Pricing

Lease Rate: \$29.95 Gross, Net of Electric & Gas (Includes \$30.00 psf tenant improvements)
 Sale Price: \$225.00 psf (Shell Only)

Available: Immediately

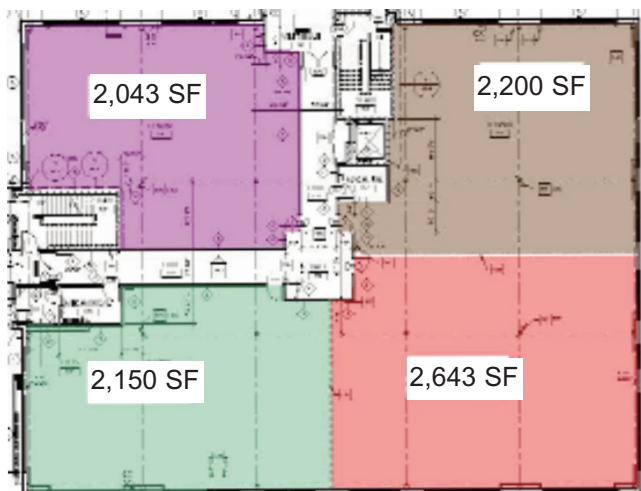
SITE PLAN



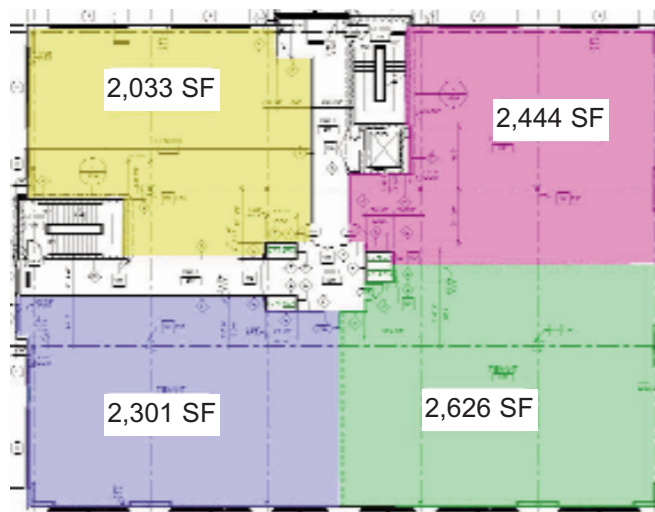
MYLES STANDISH MEDICAL CENTER

2,025 SF up to 28,699 SF

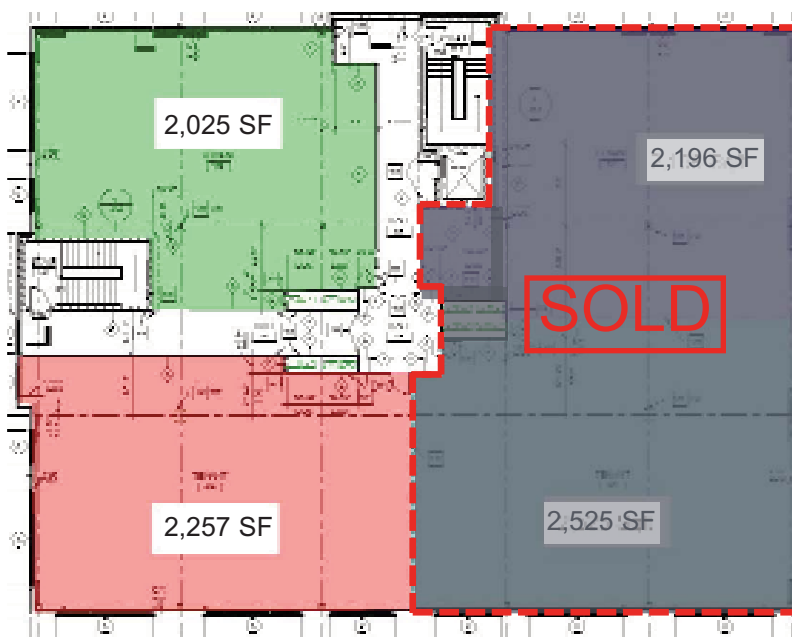
FIRST FLOOR PLAN



SECOND FLOOR PLAN



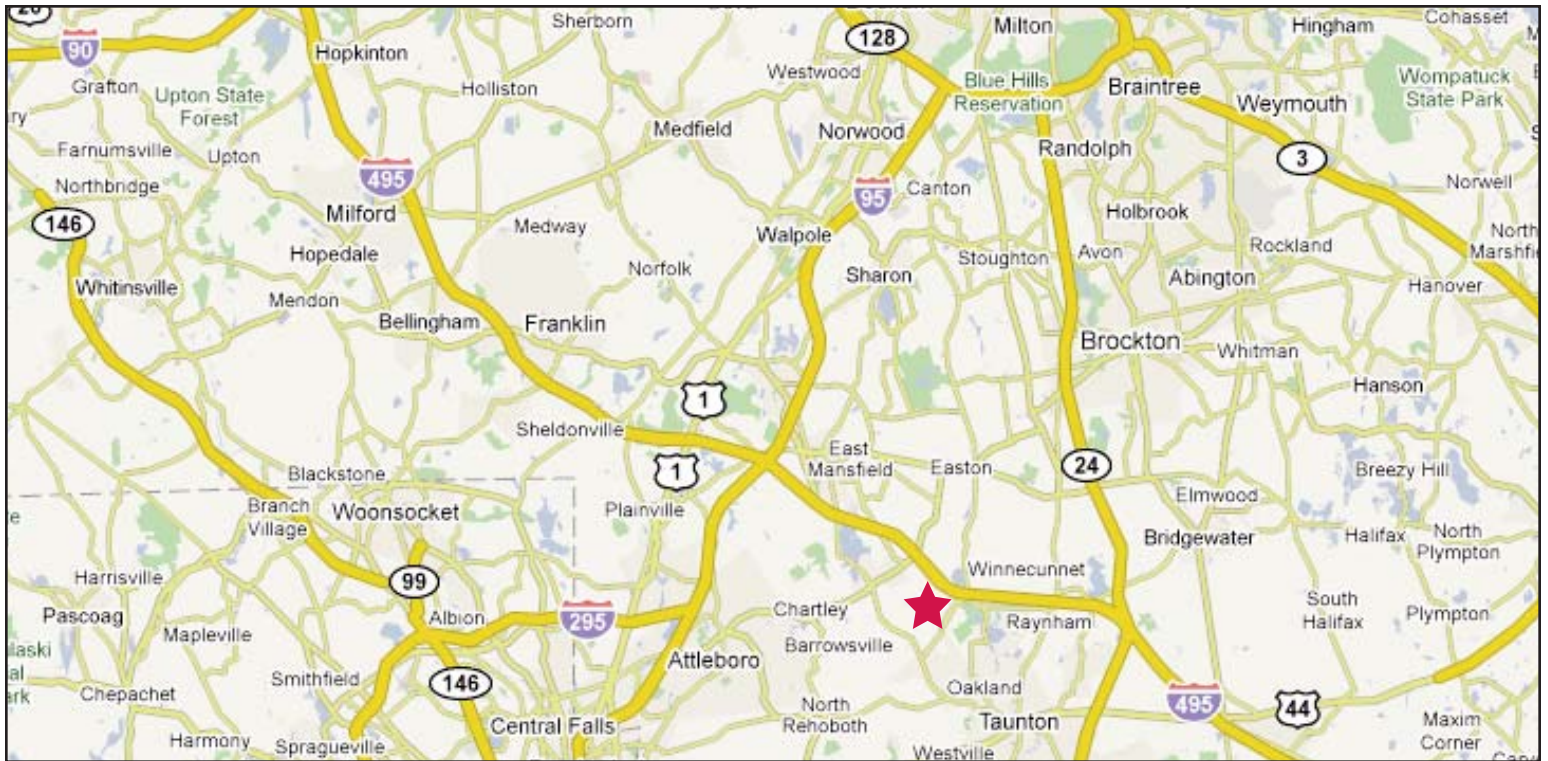
THIRD FLOOR PLAN



MYLES STANDISH MEDICAL CENTER

101 INDUSTRIAL PARK RD, TAUNTON

Available For Sale or Lease



contact information



Commercial Real Estate Services, Worldwide.

All information furnished regarding property for sale or lease is from sources deemed reliable, but no warranty or representation is made as to the accuracy thereof and same is submitted subject to errors, omissions, change of price, rental or other conditions prior to sale or lease, or withdrawal without notice.

Cathy Minnerly, Executive Vice President | 617 457 3334 | cminnerly@naihunneman.com

Ovar Osvold, Associate | 617 457 3222 | osvold@naihunneman.com

303 Congress Street | Boston, MA 02210 | 617 457 3400 | www.naihunneman.com