

100 MORSE ST | NORWOOD, MA



8,800 SF up to 19,000 SF
Office or Flex Space Available for Lease

NAI Hunneman

Commercial Real Estate Services, Worldwide.

All information furnished regarding property for sale or lease is from sources deemed reliable, but no warranty or representation is made as to the accuracy thereof and same is submitted subject to errors, omissions, change of price, rental or other conditions prior to sale or lease, or withdrawal without notice.

contact information

Cathy Minnerly, Executive Vice President | 617 457 3334 | cminnerly@naihunneman.com

Neil Sogard, Associate | 617 457 3304 | nsogard@naihunneman.com

Ovar Osvold, Associate | 617 457 3222 | osvold@naihunneman.com

303 Congress Street | Boston, MA 02210 | 617 457 3400 | www.naihunneman.com

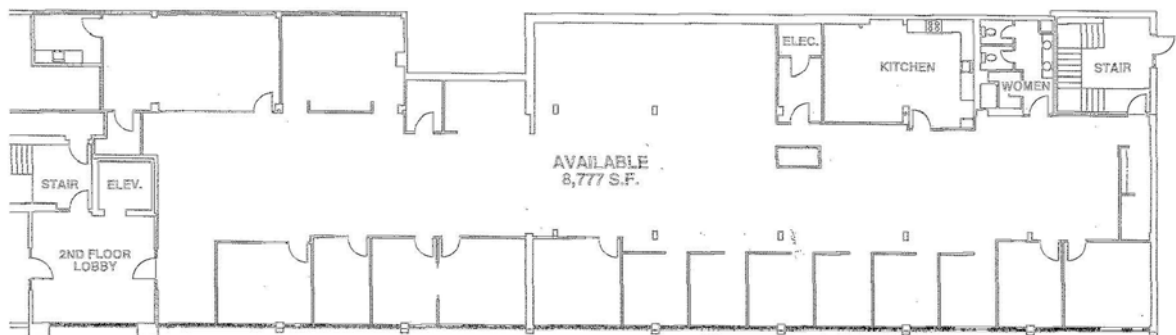
100 MORSE ST | NORWOOD

8,800 SF up to 19,000 SF Office or Flex Space

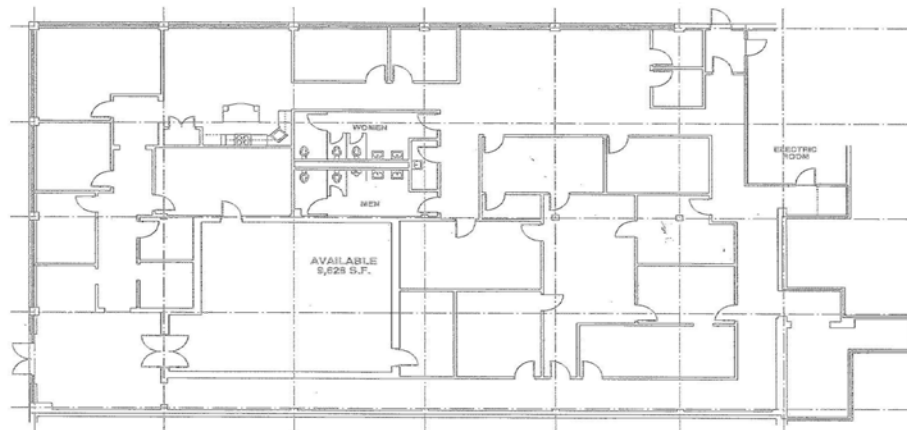
SPECIFICATIONS:

| | | |
|--------------------------------|--|--------------------------------|
| BUILDING SIZE | 95,000 SF | |
| Available First Floor: | 9,628 SF Office/Flex Space | (Contiguous by staircase) |
| Available Second Floor: | 8,777 SF Office Only | |
| LOT SIZE | 8.04 AC | |
| OCCUPANCY | Immediate | |
| LEASE RATE | \$16.95 gross net of electric, gas and cleaning | |
| FLOORS | Two (2) floors | |
| PARKING | 307 spaces | |
| UTILITIES | Electric: Town of Norwood | |
| | Gas: National Grid | |
| | Water/Sewer: Town of Norwood Water / Sewer | |
| CORPORATE NEIGHBORS | Eastern MA Surgery Center, MES Solutions, Crossmark Inc. | |
| TAXES | Real Estate: \$1.39 psf | |
| | CAM: \$2.42 psf | |
| LOCATION | Located 1/4 mile off of Route 1. | |

2ND FLOOR



1ST FLOOR



contact information

Cathy Minnerly, Executive Vice President | 617 457 3334 | cminnerly@naihunneman.com

Neil Sogard, Associate | 617 457 3304 | nsogard@naihunneman.com

Ovar Osvold, Associate | 617 457 3222 | oosvold@naihunneman.com

303 Congress Street | Boston, MA 02210 | 617 457 3400 | www.naihunneman.com

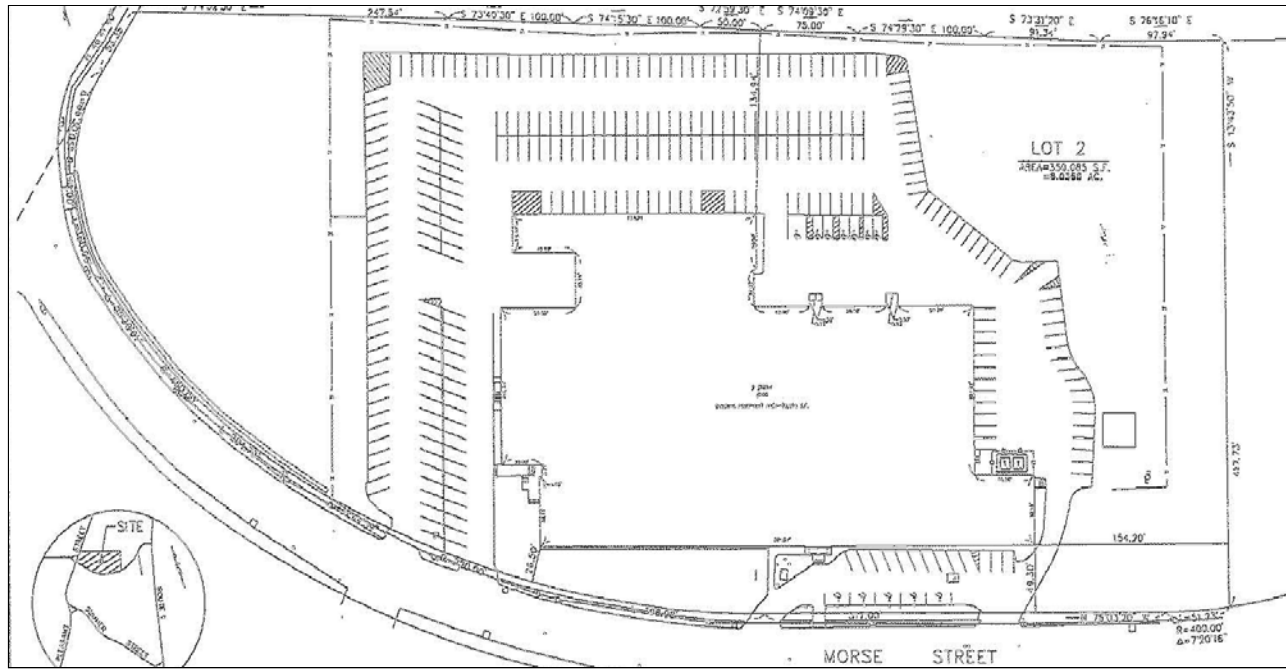


Commercial Real Estate Services, Worldwide.

All information furnished regarding property for sale or lease is from sources deemed reliable, but no warranty or representation is made as to the accuracy thereof and same is submitted subject to errors, omissions, change of price, rental or other conditions prior to sale or lease, or withdrawal without notice.

100 MORSE ST | NORWOOD

Available for Lease



Commercial Real Estate Services, Worldwide.

All information furnished regarding property for sale or lease is from sources deemed reliable, but no warranty or representation is made as to the accuracy thereof and same is submitted subject to errors, omissions, change of price, rental or other conditions prior to sale or lease, or withdrawal without notice.

contact information
Cathy Minnerly, Executive Vice President | 617 457 3334 | cminnerly@naihunneman.com

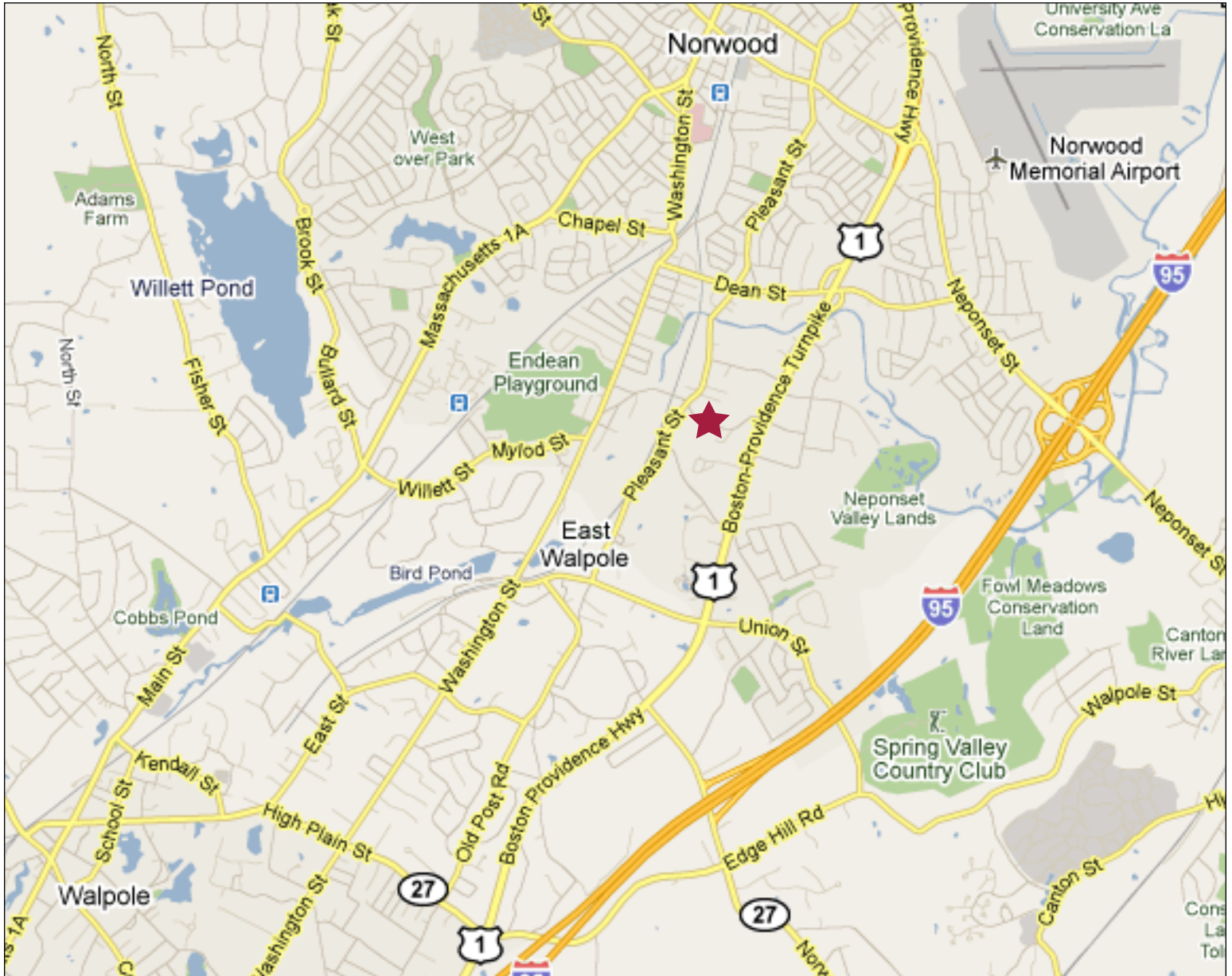
Neil Sogard, Associate | 617 457 3304 | nsogard@naihunneman.com

Ovar Osvold, Associate | 617 457 3222 | osvold@naihunneman.com

303 Congress Street | Boston, MA 02210 | 617 457 3400 | www.naihunneman.com

100 MORSE ST | NORWOOD

8,800 up to 19,000 SF Office/Flex Space



contact information

Cathy Minnerly, Executive Vice President | 617 457 3334 | cminnerly@naihunneman.com

Neil Sogard, Associate | 617 457 3304 | nsogard@naihunneman.com

Ovar Osvold, Associate | 617 457 3222 | osvold@naihunneman.com

303 Congress Street | Boston, MA 02210 | 617 457 3400 | www.naihunneman.com



Commercial Real Estate Services, Worldwide.

All information furnished regarding property for sale or lease is from sources deemed reliable, but no warranty or representation is made as to the accuracy thereof and same is submitted subject to errors, omissions, change of price, rental or other conditions prior to sale or lease, or withdrawal without notice.