

# FOR LEASE

## 1 Centennial Drive | Peabody

12,000 SF TO 38,782 RSF OF WAREHOUSE/MANUFACTURING SPACE



### BUILDING INFORMATION

Building Size: 53,416 RSF.  
Available SF: 38,782 SF with 6,900 SF Office  
Subdivides to: 12,000 SF including 3,450 SF Office  
26,782 SF includes 3,450 SF Office  
Loading Dock: 5 Tail board docks in building  
2 Tail board docks on one side  
3 Tail board docks on other side  
1 drive-in door  
Clear Height: 15'/17'  
Land Area: 4.63 Acres  
Year Built: 1979/1965  
Sprinkler: Wet system  
Stories: 1  
Column spacing: 30' W x 40' D  
Power: 1600 AMP/480 V/3 Phase  
Parking: 175 Surface space or 3.16/1,000 SF  
Zoning: IP  
Crane: 1-20 Ton  
Utilities: *Electric:* Peabody Municipal Light  
*Water:* City  
*Sewer:* City

**38,782 RSF WAREHOUSE/  
MANUFACTURING SPACE**

**A PRIME ROUTE 128  
INDUSTRIAL PARK LOCATION**



### contact information

**David Gilkie, Senior VP**

direct: 617 457 3202

email: [dgilkie@naihunneman.com](mailto:dgilkie@naihunneman.com)



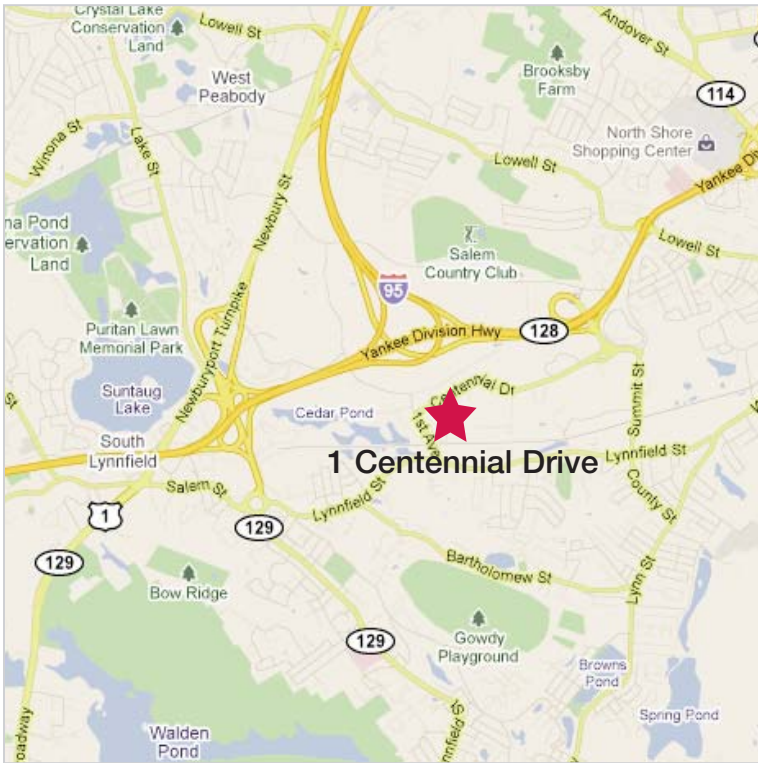
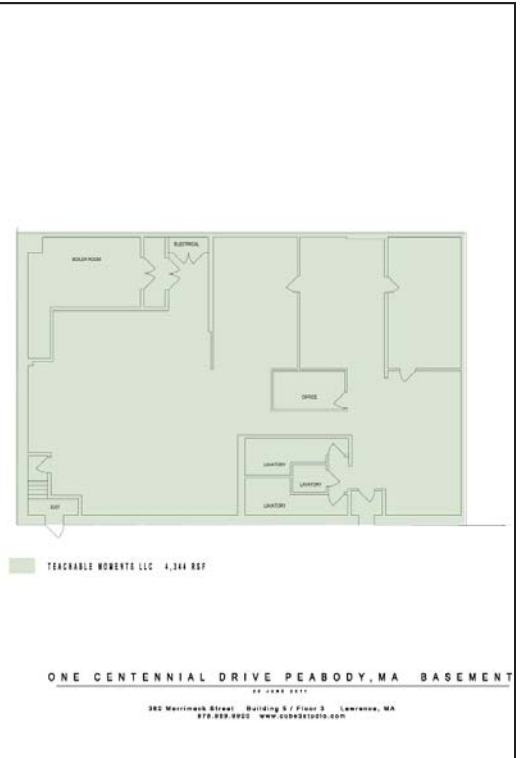
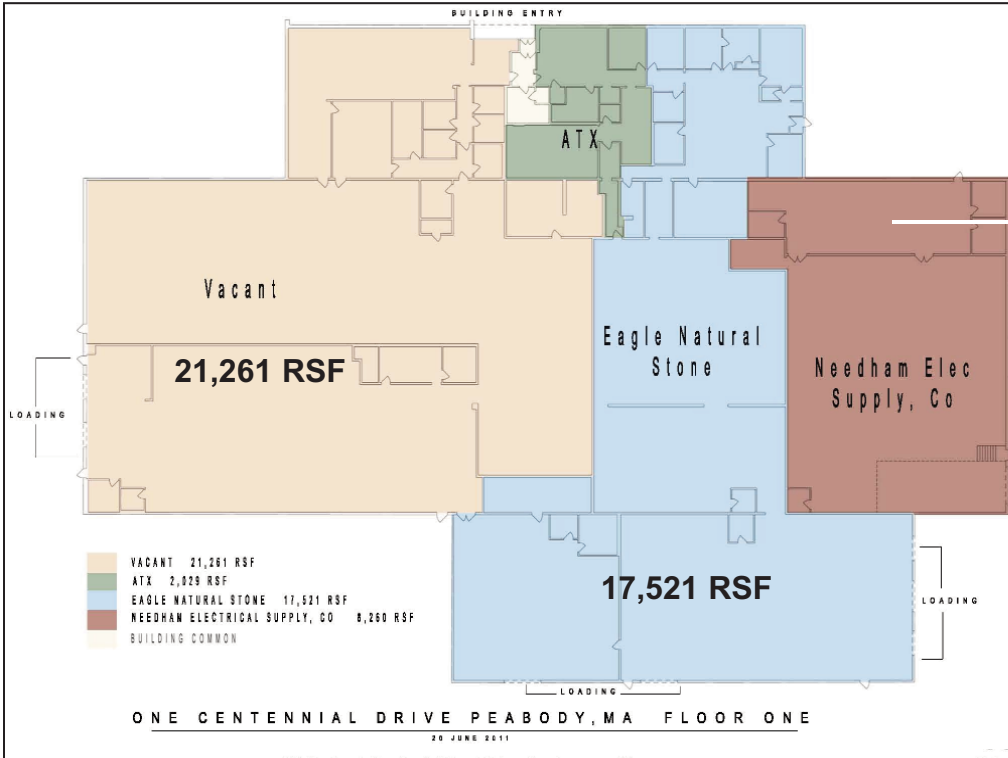
Commercial Real Estate Services, Worldwide.

303 Congress Street | Boston, MA 02210 | 617 457 3400 | [www.naihunneman.com](http://www.naihunneman.com)

All information furnished regarding property for sale or lease is from sources deemed reliable, but no warranty or representation is made as to the accuracy thereof and same is submitted subject to errors, omissions, change of price, rental or other conditions prior to sale or lease, or withdrawal without notice.

# FOR LEASE

## 1 Centennial Drive | Peabody



**Warehouse/Manufacturing Space**

**contact information**

**David Gilkie, Senior VP**  
 direct: 617 457 3202  
 email: dgilkie@naihunneman.com